



National Kaohsiung
CENTER FOR THE ARTS

WEI WU YINGGE

衛武營 國家藝術文化中心

國家表演藝術中心 National Performing Arts Center

RECITAL HALL

Technical Information

Table of Contents

| | |
|--|-----------|
| 1 General Information | 1 |
| 1-1 National Kaohsiung Center for the Arts (WEIWUYING) | 1 |
| 1-2 Recital Hall | 1 |
| 1-3 Traffic Information | 2 |
| 1-4 Contact Information | 2 |
| 1-5 Stage door | 2 |
| 1-6 Auditorium / Seating | 3 |
| 1-7 Plan | 5 |
| 1-8 Section | 6 |
| 2 Stage | 7 |
| 2-1 Stage | 7 |
| 2-2 Hoisting | 8 |
| 3 Lighting | 9 |
| 3-1 Lighting instrument | 9 |
| 3-2 Accessories | 10 |
| 3-3 Lighting DMX system | 13 |
| 3-4 Lighting Circuit | 14 |
| 3-5 Portable Lift | 16 |
| 3-6 Additional Power Supply | 16 |
| 3-7 Working Light / House Light | 16 |
| 4 Audio/Video Systems | 17 |
| 4-1 Audio Facilities | 17 |
| 4-2 Control Room | 21 |
| 4-3 Stage Manager' s Desk | 21 |
| 4-4 Microphone | 22 |
| 4-5 Communications | 22 |
| 4-6 Locations of Communications | 23 |
| 4-7 Stage Cameras and Video Surveillance Systems | 23 |
| 4-8 Paging Systems | 24 |
| 4-9 Projector | 25 |
| 5 Backstage Facilities | 26 |
| 5-1 Dressing Rooms and Green Rooms | 26 |
| 5-2 Orchestra Facilities | 26 |
| 5-4 Loading Dock | 27 |
| 5-5 Other Facilities | 29 |

Last updated : 2025/1/25

1 General Information

1-1 National Kaohsiung Center for the Arts (WEIWUYING)

CENTER FOR THE ARTS, ARTS FOR THE PEOPLE, National Kaohsiung Center for the Arts will become one of the important theatre complexes of the international art field. It includes four performance blocks, the 2,236 seat Opera House, the 1981 seat Concert Hall, the 1210 seat Play House and the 434 seat Recital Hall.



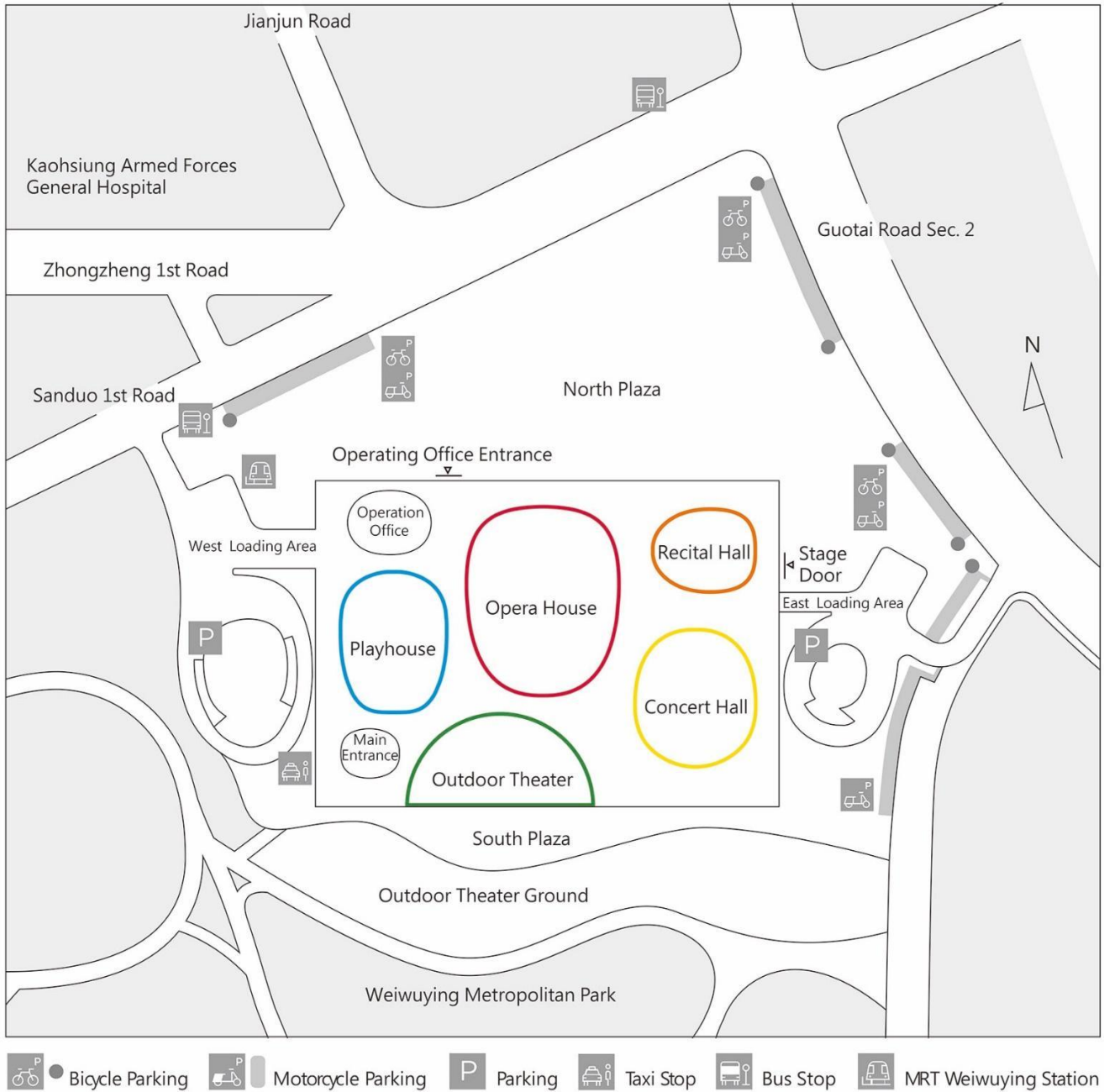
1-2 Recital Hall

The Recital Hall is mainly for chamber music, solo recitals, or other smaller performances. The sound-absorption can be adjusted to meet the needs with diverse types of performances, providing the most optimal acoustic effect.

The design is a variation of the traditional shoebox style, where a short partition wall is erected along the center line of the seating area to convert the Recital Hall into a vibrantly asymmetrical shoebox, while also providing reflection of direct sounds for the front seating area. To meet the needs of various types of performances, the sound-absorption value can be adjusted accordingly in the Recital Hall. An entire circle of sound-absorbing drapery behind the perforated wooden panels surrounds the upper half of the Recital Hall. The size of the drapery used is determined by performance genres so as to offer a superb acoustic effect.



1-3 Traffic Information



National Kaohsiung Center for the Arts (Weiwuying)

No.1, Sanduo 1st Rd., Fengshan Dist., Kaohsiung City 83075, Taiwan

+886 7-262-6666

service@npac-weiwuying.org

1-4 Contact Information

1-5 Stage door

Ground floor access is from the north and east side of building. Enter from Operating office entrance on Sanduo 1st Road or Stage Door on Guotai Road.

Basement Level 1 access is from Sanduo 1st Road entrance for Opera House and Playhouse, Guotai Road entrance for Concert Hall and Recital Hall.

Working pass will be required for entry.

1-6 Auditorium / Seating

Seating Capacity : 434 seats

■ House Seats : 407 seats (1F/207 Seats - 2F/200 Seats)

♿ Wheelchairs Seats : 6 seats

■ Companion Seats : 6 seats

■ Control Area Seats : 8 seats

■ Reserved Seats for Tech Table : 4 seats

■ Reserved Seats for FOH : 3 seats

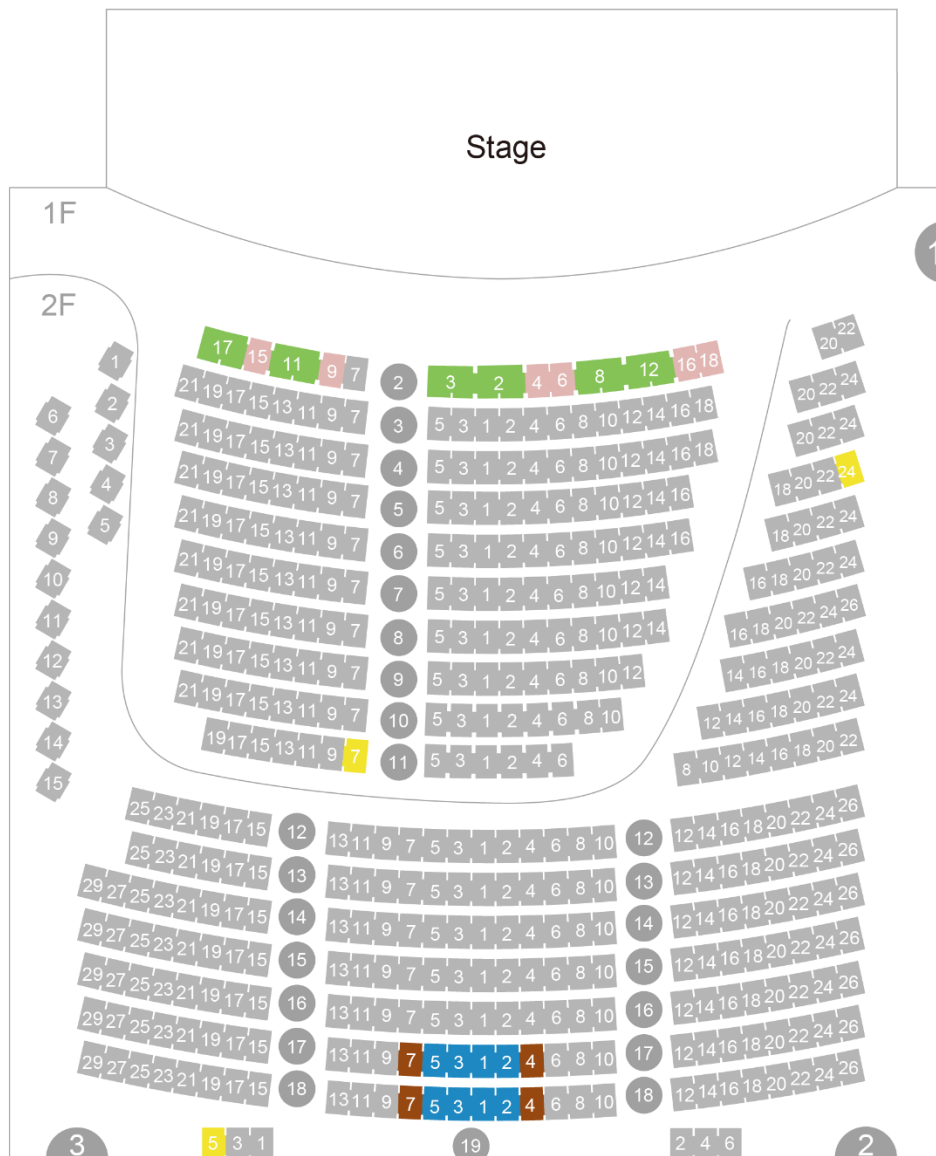


Figure 1.1- Recital Hall Seating plan

Set Up Equipment Recommended Seat

| Set Up Equipment Seat | Reserved Seat | Notes |
|--|--|--|
| 1st Floor 11 Row Seat 1 | 1st Floor 10 Row Seat 1 1st Floor 11 Row Seat 2、3 | For Photo Shooting & Video Shooting |
| 2nd Floor 18 Row Seat 1 | 2nd Floor 17 Row Seat 1 2nd Floor 18 Row Seat 2、3 | For Photo Shooting & Video Shooting 18 rows of rear walkways need to be kept open |
| V Row Seat 1 | V Row Seat 2、3、4、5、6、7 | For Photo Shooting & Video Shooting |
| Set Up Control Area Seat | Reserved Seat | Notes |
| 1st Floor 10 Row Seat 1、2、3、5 1st Floor 11 Row Seat 1、2、3、5 2nd Floor 17 Row Seat 1、2、3、5 2nd Floor 18 Row Seat 1、2、3、5 | 1st Floor 10 Row Seat 4 1st Floor 11 Row Seat 4 2nd Floor 17 Row Seat 4、7 2nd Floor 18 Row Seat 4、7 | 18 rows of rear walkways need to be kept open |
| 1st Floor 3 Row Seat 22 | 1st Floor 2 Row Seat 20、22 1st Floor 3 Row Seat 20、24 1st Floor 4 Row Seat 20、22、24 | Suggested Location for Subtitle Projectors |

1-7 Plan

表演廳一樓化妝室位置圖

Recital Hall 1F Dressing Room Map

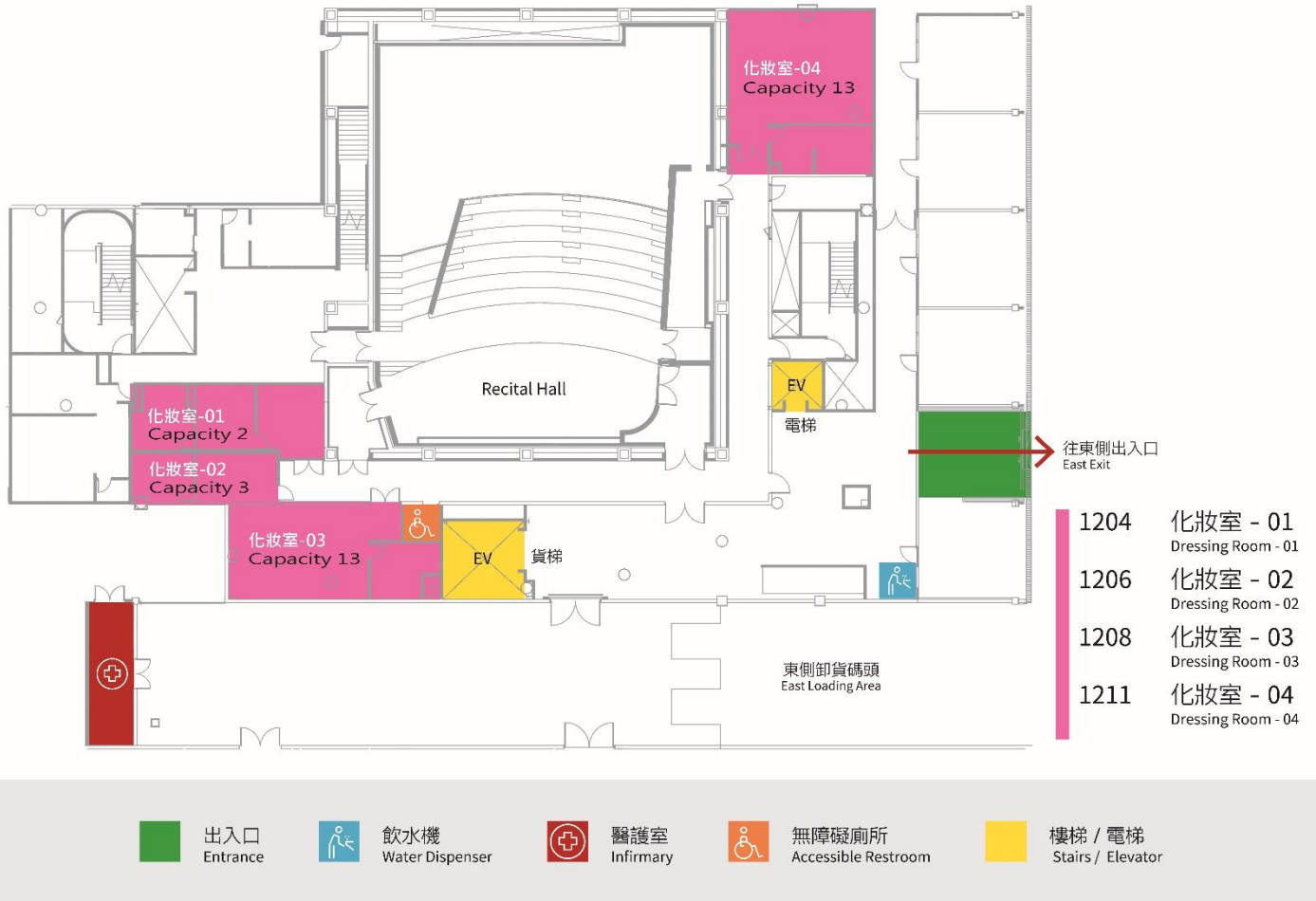


Figure 1.2- Recital Hall Plan

1-8 Section

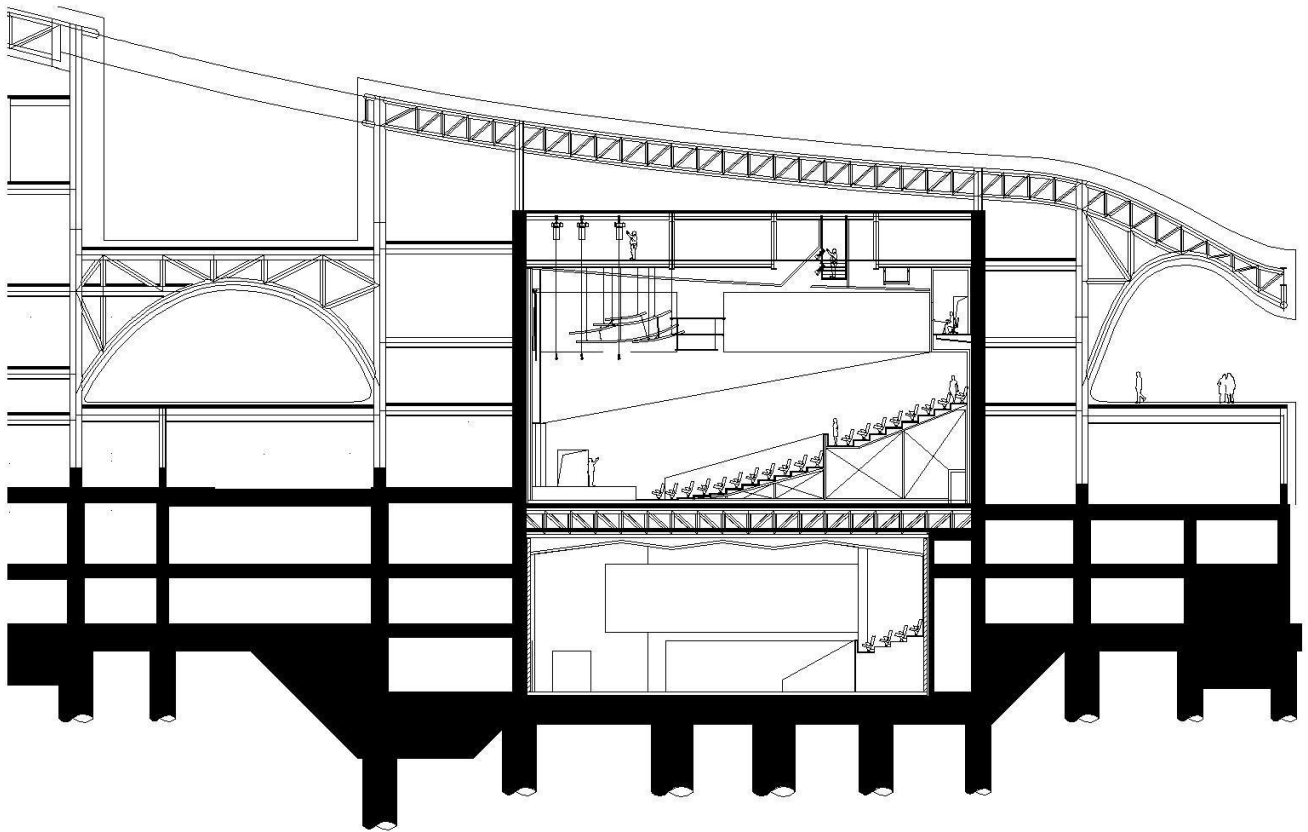


Figure 1.3- Recital Hall Section

2 Stage

2-1 Stage

15.6m (Width) x 5.4m (depth) x 0.7m (height from auditorium floor to stage level)

Sound reflect absorbing drape

Fixed acoustic panel, 8.5m above the stage level

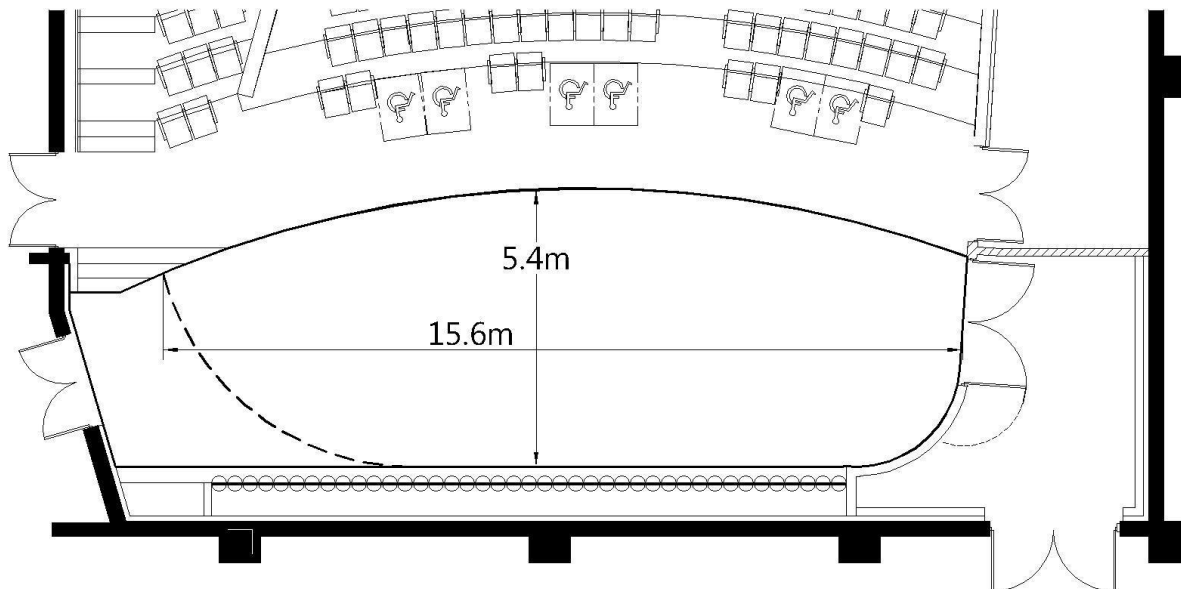


Figure 2.1-Stage Plan

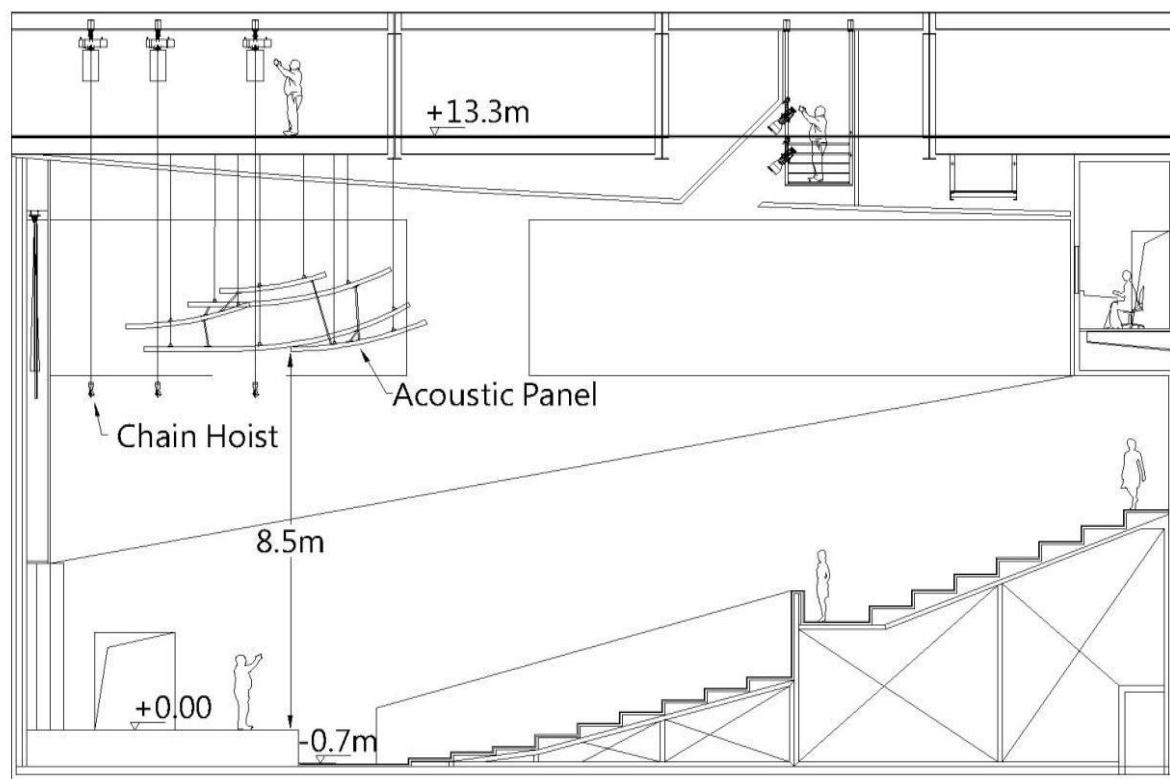


Figure 2.2- Acoustic Panel Plan

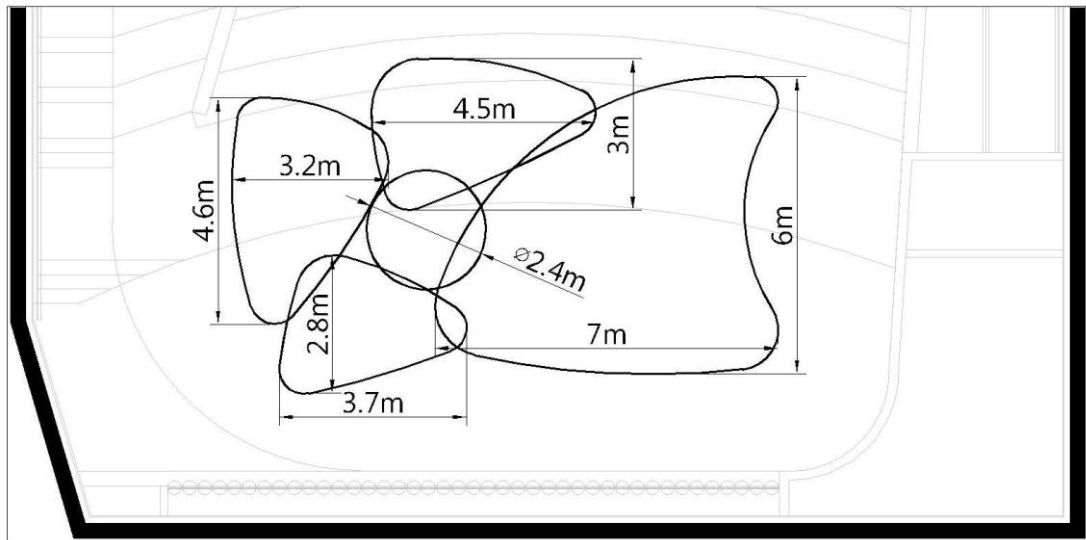


Figure 2.3- Acoustic Panel Plan

2-2 Hoisting

2-2-1 Chain hoist (point load 1000kg, fixed speed: 9.6m/min)

Above Stage, 9 sets, operation length 15m, Movecat PLUS lite chain hoists.

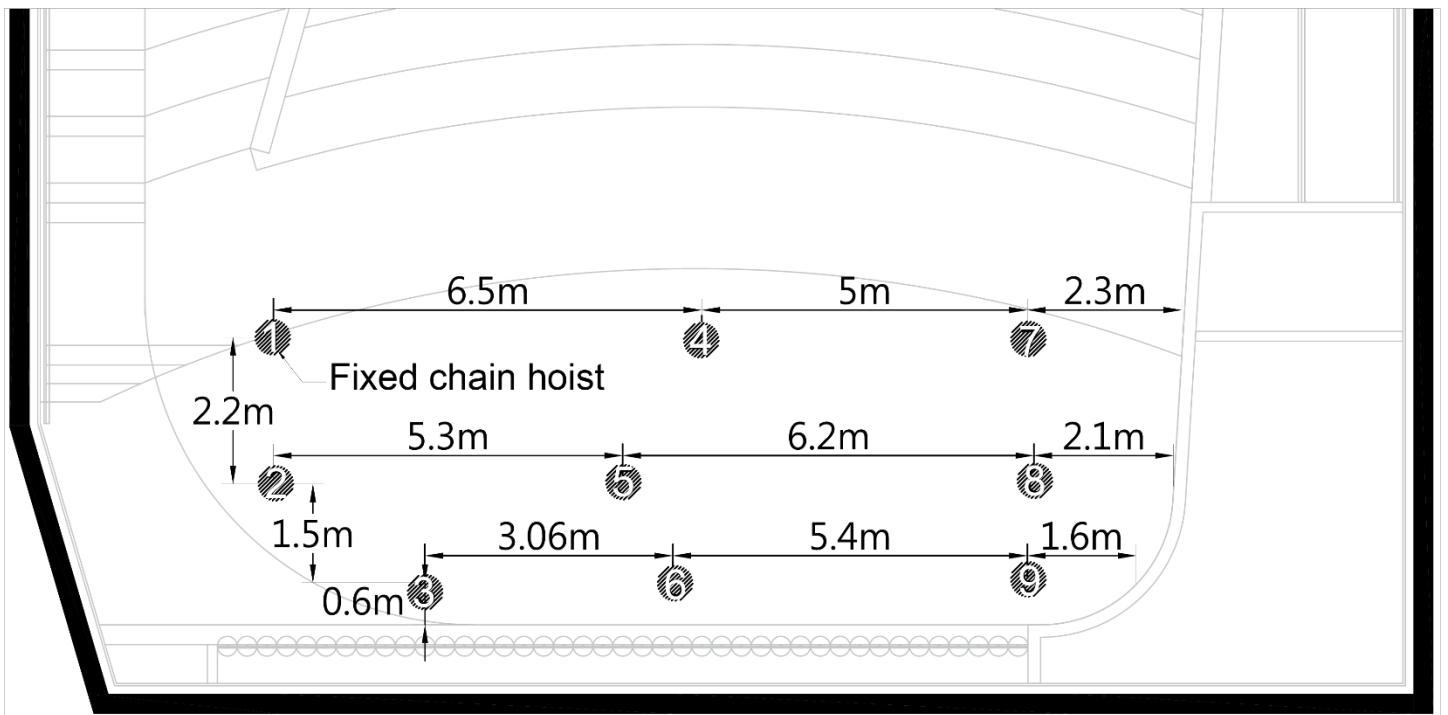


Figure 2.4 - Stage Hoisting plan

2-2-2 Control System

The chain hoists control system is located in the grid area and can be connected to both side of stage, through Movecat MRC ID remote controller operates in the stage area.

2-2-3 Trusses

| Item | Quantity | Dimension | Paid item |
|---------------------------|----------|---|-----------|
| EUROTRUSS HD33 (Triangle) | 3 | 0.29m(equilateral triangle length) x 0.25m(Height) x 4 m(length) | * |
| | 19 | 0.29m(equilateral triangle length) x 0.25m(Height) x 3 m(length) | * |

Items with * mark are paid items. Please refer to the rate tables of National Kaohsiung Center for the Arts.

*Labor for disassembly and assembly not included.

3 Lighting

3-1 Lighting instrument

| Item | Position | Model | Specifications | Quantity | Frame size | Note | Paid Item | |
|--|---------------------|--|--------------------------------|-----------|-------------|---|-----------|--|
| Lighting Console | Control Booth | GrandMA 2 Ultra Light | | 1 | | | | |
| Dimmer System | Dimmer Room | State Automation Solution | 220V 3kW/Circuit | 120ch | | | | |
| Ellipsoidal Reflector Spotlight | Catwalk | Chauvet Ovation E-26WW IP(14°lens) | 100-240V /230W | 16 | 19.1x19.1cm | | | |
| | | Selecon SPX 15°-35° | 220V/800W | 8 | 15.8x15.8cm | | | |
| | SR Lighting Box | Selecon SPX 19° | 220V/800W | 4 | 15.8x15.8cm | | | |
| | | Selecon SPX 15°-35° | | 4 | | | | |
| | SL Lighting Box | Selecon SPX 19° | 220V/800W | 4 | 15.8x15.8cm | | | |
| | | Selecon SPX 15°-35° | | 4 | | | | |
| | Stage Top Light | ADB Orkis Fresnel Pebble | 220V | 10 | | | | |
| | Storage | | Selecon SPX 14° | 220V/800W | 6 | 15.8x15.8cm | | |
| | | | Selecon SPX 19° | | 16 | | | |
| | | | Selecon SPX 15°-35° | | 2 | | | |
| | | | ETC Source Four 36° | 220V/750W | 16 | 15.9x15.9cm | | |
| ETC Source Four 50° | | | 220V/750W | 10 | | | | |
| 2KW Fresnel Spotlight 8" | | Selecon Arena Theatre 8" Fresnel 7°-60° | 220V/2kW | 20 | 24.5x24.5cm | | | |
| Parabolic Aluminized Reflector Spotlight | | PAR 64-Kupo PL-64LB | 220V/1kW | 32 | 25.4x25.4cm | Lamp : W x 8 、 M x 16 、 N x 8 | | |
| Follow Spot | Catwalk | Lycian M2 Model 2040 1.2 | 220V/1.2kW | 1 | | | | |
| | | Rob T11 Profile | 100- 240V/420W | 2 | | | | |
| Strip Light | Stage | Selecon PL TR2 RGB 18 Striplights | 110-220V/ 2.5A-1.3A 280W | 1 Set | | If manual needed, please contact TC Team. | * | |
| Acoustic Panel Light | Install in the wall | Clay Paky Mini-B WW | 100-240V /40W | 4 | | | * | |
| Follow Spot Operator | | | Operator/ 4 hour | 1 | | | * | |

Items with * mark are paid items. Please refer to the rate tables of National Kaohsiung Center for the Arts.

3-2 Accessories

| Item | Specifications | Size | Quantity |
|------------------------|---|--------|----------|
| Barn Door | 2kW Fresnel | | 10 |
| Iris | For Selecon Ellipsoidal Reflector Spotlight | | 10 |
| Gobo Holder | For Selecon Ellipsoidal Reflector Spotlight | B Size | 20 |
| | For ETC Source Four Ellipsoidal Reflector Spotlight | A Size | 20 |
| Power Distribution Box | 8CIR CEE Form Female Plug | | 9 |
| Multi-Cable | 16pin Multi-Cable Harting Connector | 5m | 4 |
| | | 10m | 2 |
| | | 15m | 2 |
| Ex-Cable | CEE16A | 1.5m | 30 |
| | | 2m | 30 |
| | | 3m | 20 |
| | | 5m | 14 |
| | | 10m | 9 |
| | | 15m | 10 |
| Adapter Cable | CEE 16A(M) To Stage-Pin(F) | | 10 |

所有外加燈具請從Universe 5 開始Patch · 謝謝!!
 Please patch all additional lighting fixtures from 5.001, thanks.

反音柱後LED Strip, 共六盞, 每盞12格, (Fixture #101~172), 每格為RGB 3CH, 編碼從 (3)001 開始
 Each LED Strip has 12 cells, each cell contents 3 DMX channels(R/G/B)

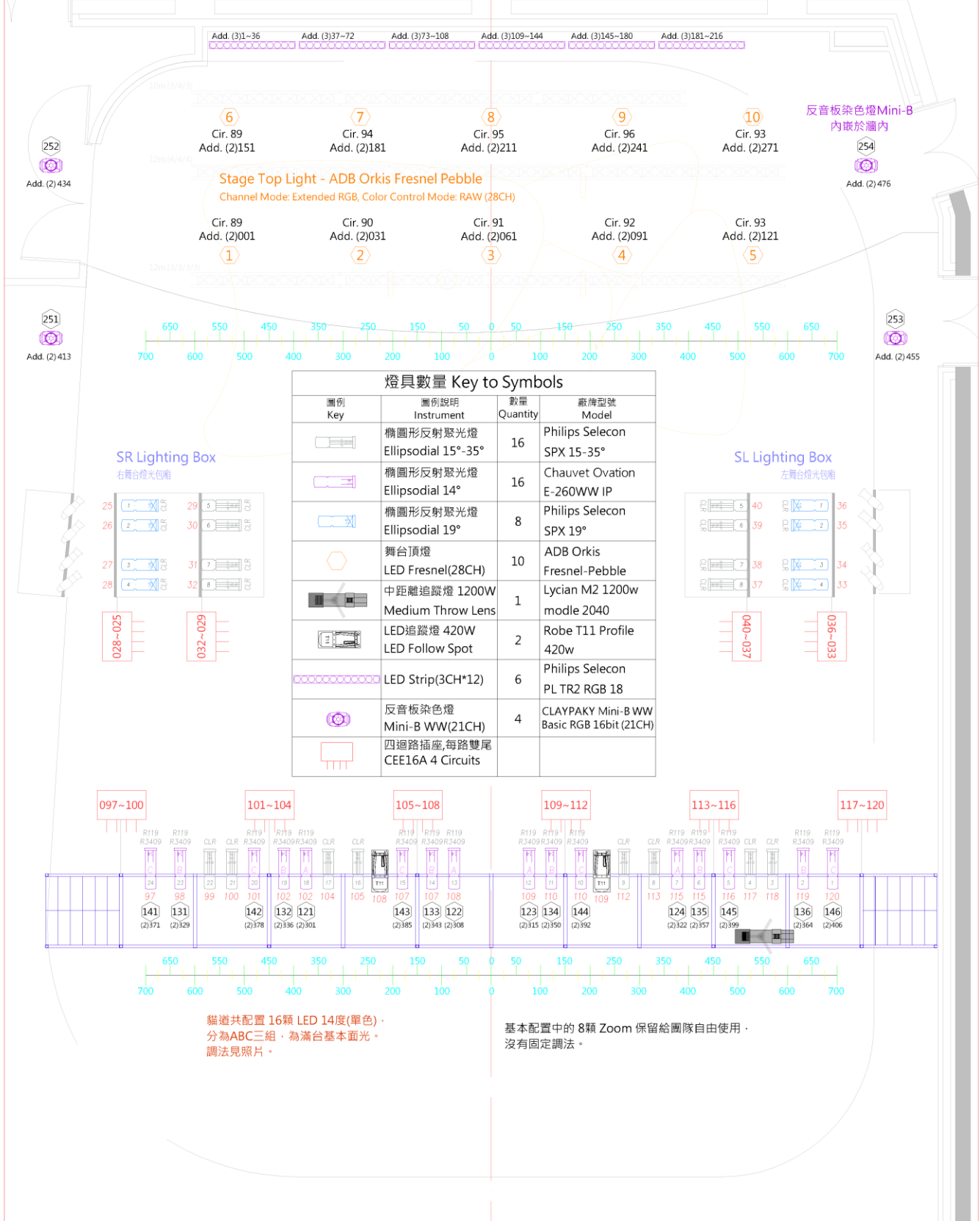


Figure 3.2.1- FOH Lighting Plot

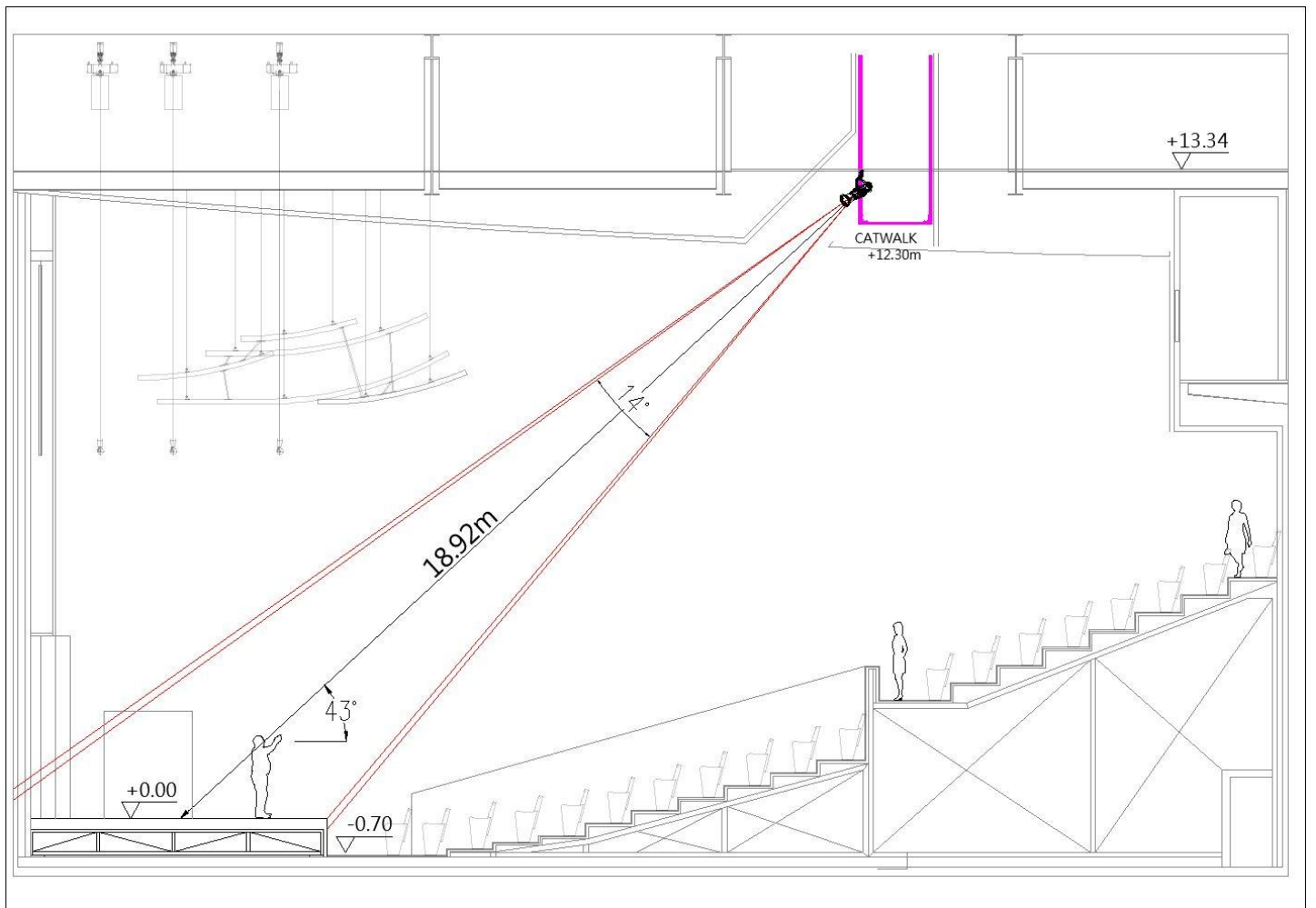


Figure 3.2.2- Lighting Section

3-3 Lighting DMX system

* Please patch all additional fixtures from (5)001,thanks.

| Item | Position | Model | Quantity | Note | Paid Item |
|-----------|-----------------------------------|------------------------|-----------|--|-----------|
| Node | Grid | MA3 4Port | 1 | | |
| | Lighting Box L/R | MA2 2Port | 1/1 | | |
| | Off Left/Off Right UL/UR Stage | MA2 2Port | 1/1 | | |
| | | | 1/1 | | |
| | Portable | | MA2 2Port | 1 | |
| MA3 2Port | | | 1 | | |
| Isolator | Grid | Chauvet RDMX Splitter8 | 2 | All isolators are 2 in 4 out (default) | |



Name : RH-Grid-4Port-6
IP Address : 192.168.0.140

Details :
4 DMX output
2 Isolator(1 to 8 / 2 to 4)
1 ELC Isolator for ADB Orkis

DMX Reel *6 (3 for static use)
Details : DMX Multi Spin (4 to 4)

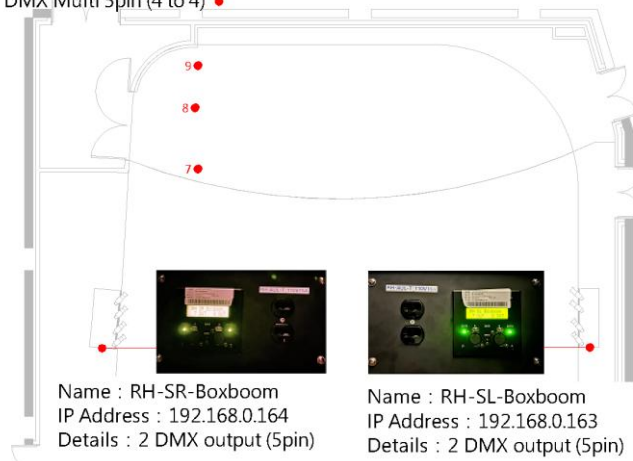


Figure 3.3.1- Grid and Lighting Box Area Node Position Layout



Name : RH-UR-2Port(underground)
IP Address : 192.168.0.156
Details : 2 DMX output (5pin)



Name : RH-UL-2Port(underground)
IP Address : 192.168.0.155
Details : 2 DMX output (5pin)

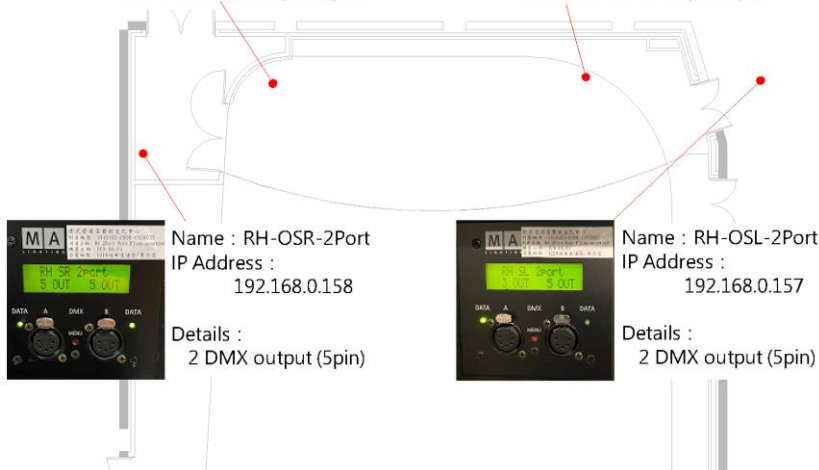


Figure 3.3.2- Stage Area Node Position Layout

3-4 Lighting Circuit

3-4-1 Stage area

| Area and Position | Connector | Dimmer Circuit No. | Load | Network Circuit No. |
|-------------------|-----------------------------|--------------------|------|---------------------|
| Stage/L | Harting (8 circuits) | 001 ~ 008 | 3kW | LN01~LN02 |
| Stage/R | Harting (8 circuits) | 009 ~ 014 | 3kW | LN03~LN04 |
| | CEE 16A (1 outputs/circuit) | 015 ~ 016 | | |
| Up Stage | Harting (8 circuits) | 017 ~ 022 | 3kW | LN05~LN06 |
| Side Stage/L | | LN07~LN10 | | |
| Control Booth | | LN11~LN18 | | |

Ca = CEE 16A
Cb = CEE 32A
H = Harting(8 Circuits)

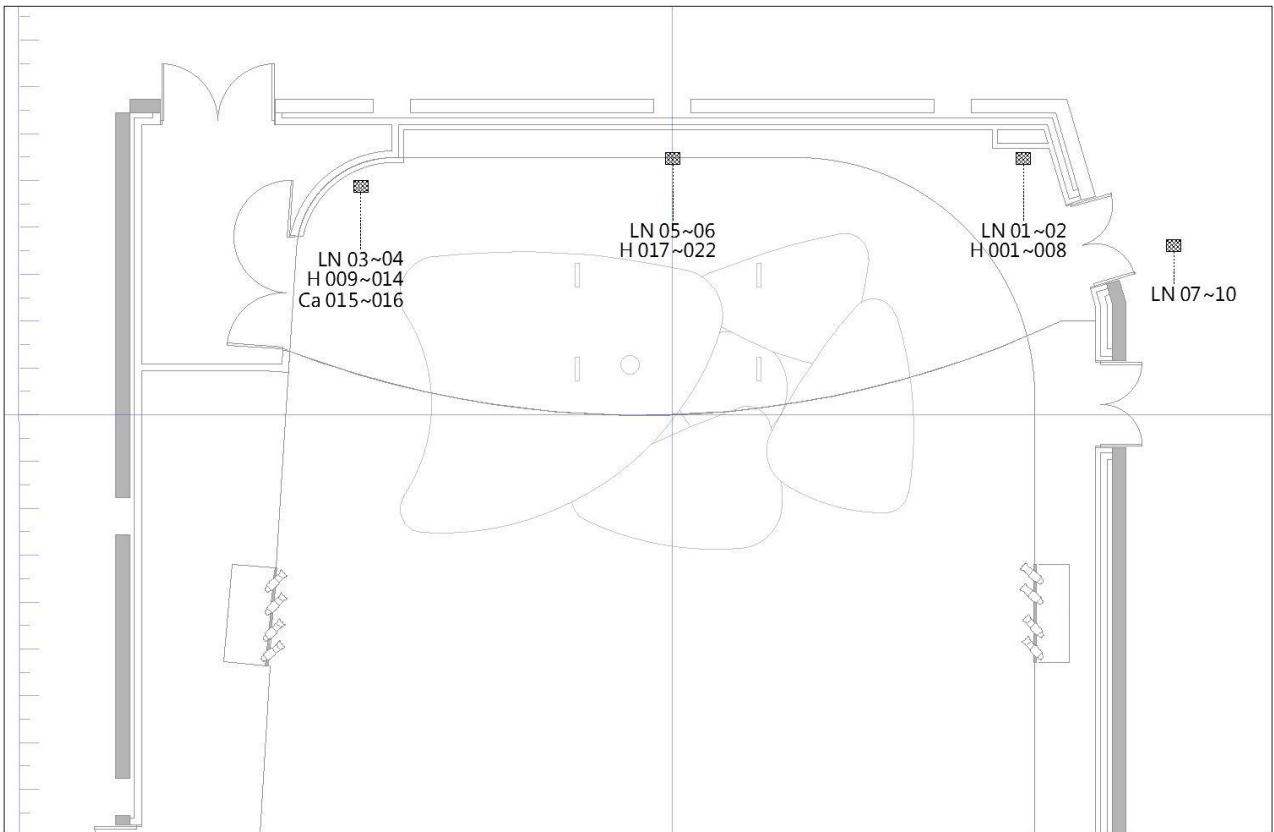


Figure 3.4.1.1- Stage Area Lighting Circuit Layout

3-4-2 Front of House

| Area and Position | Connector | Dimmer Circuit No. | Load | Network Circuit No. |
|-------------------|-----------------------------|---------------------------------|------|---------------------|
| Lighting Box/R | CEE 16A (2 outputs/circuit) | 025~ 028 | 3kW | LN19~LN20 |
| | | 029 ~ 032 | | |
| Lighting Box/L | CEE 16A (2 outputs/circuit) | 033 ~ 036 | 3kW | LN21~LN22 |
| | | 037 ~ 040 | | |
| Stage Grid Area | Harting (8 circuits) | 041 ~ 048 | 3kW | LN23~LN24 |
| | | 049 ~ 056 | | LN25~LN26 |
| | | 057 ~ 064 | | LN27~LN28 |
| | | 065 ~ 072 | | LN29~LN30 |
| | | 073 ~ 080 | | LN31~LN32 |
| | | 081 ~ 088 | | LN33~LN34 |
| Catwalk | CEE 16A (2 outputs/circuit) | 089 ~ 096 (For Stage Top Light) | 3kW | LN35~LN36 |
| | | 097 ~ 100 | | |
| | | 101 ~ 104 | | |
| | | 105 ~ 108 | | |
| | | 109 ~ 112 | | |
| | | 113 ~ 116 | | |
| | | 117 ~ 120 | | |

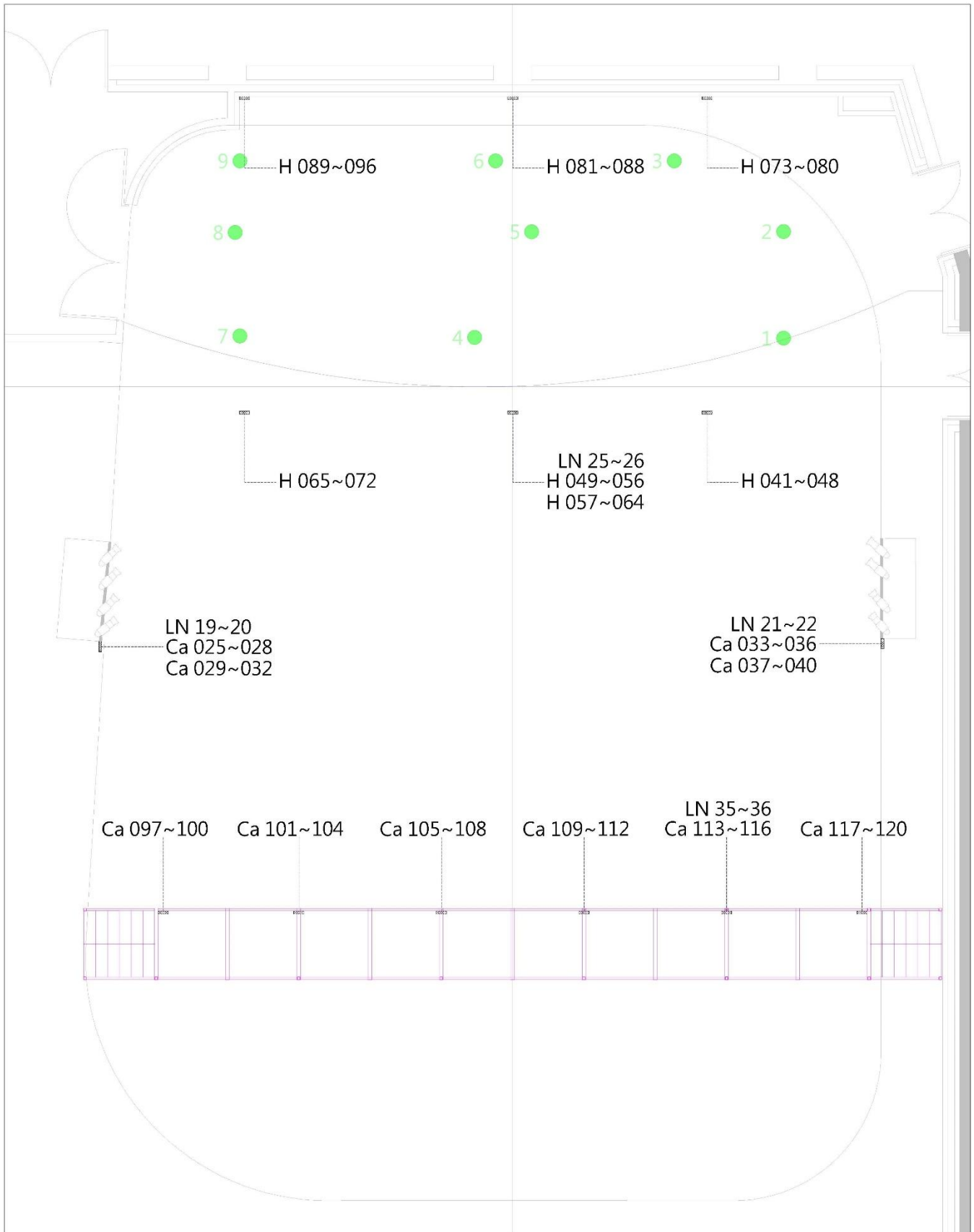


Figure 3.4.2.1- Grid Area-Lighting Circuit Layout

3-5 Portable Lift

Brand and Model: Snorkel UL-25 (AC Power Supply)
 Maximum height: 7.6m
 Maximum weight: 159kg
 Quantity: 1

3-6 Additional Power Supply

| Function | Position | Specifications | Quantity |
|----------|--|---|----------|
| Stage | Up Stage Left / Stage Right Waiting Area | 3 § 4W+G 380V/220V/60Hz (CEE 125A/3P+N+E) | 1 / 1 |
| Light | | 3 § 4W+G 208V/120V/60Hz (Camlock 250A) | 1 / 1 |
| Sound | | 3 § 4W+G 208V/120V/60Hz (Camlock 50A) | 1 / 1 |



Figure 3.6- Additional Power Supply

3-7 Working Light / House Light

Working Light

Work lights provided white and blue light mode, and the control switch is located on the stage manager' s Desk.
 Lighting area: Side stage entrance, Lighting Box, Grid area and Cat walk.

House Light

Auditorium lights consists houselights and step lights, which can be separately controlled and dimmed. The control panel is located on the stage manager' s Desk and lighting control room.

4 Audio/Video Systems

4-1 Audio Facilities

| Item | Quantity | Brand-and Model | Paid Item |
|--|----------|---|-----------|
| Digital speaker | 4 | Renkus-Heinz IC 8RII | |
| 12" Active stage monitor speakers | 4 | Renkus-Heinz PN121M/12 | |
| 6.5" Active stage monitor speakers | 4 | Renkus-Heinz PN61 | * |
| 2CH Equalizer | 2 | XTA GQ600 | * |
| AD/DA, I/O Digital I/O Fiber Module | 2 | Studer D21M | |
| Stereo audio converter | 1 | Whirlwind PcUSB 2-Channel USB Direct Box | |
| Mixing console | 1 | Midas M32R LIVE Stage Box : Midas DL16 | * |
| Wireless PA equipment | 2 | MIPRO MA-708 | * |
| Wireless PA equipment | 2 | MIPRO MA-808 | * |
| Wireless PA equipment | 2 | MIPRO MA-828 | * |
| Mixing console Comb | 4 | Mixer : Yamaha DM3 Standard Handheld Wireless microphone : MIPRO ACT-747 x 1, MIPRO ACT-700H x 4 Speaker : Renkus-Heinz PN 61 x 2 Including assembly and disassembly and execution manpower. | * |
| Mixing console | 1 | Midas heritage D HD96-24-CC-TP Stage Box : Midas DL231 | * |
| Signal Splitters | 1 | Midas DL431 | * |

Items with * mark are paid items. Please refer to the rate tables of National Kaohsiung Center for the Arts.

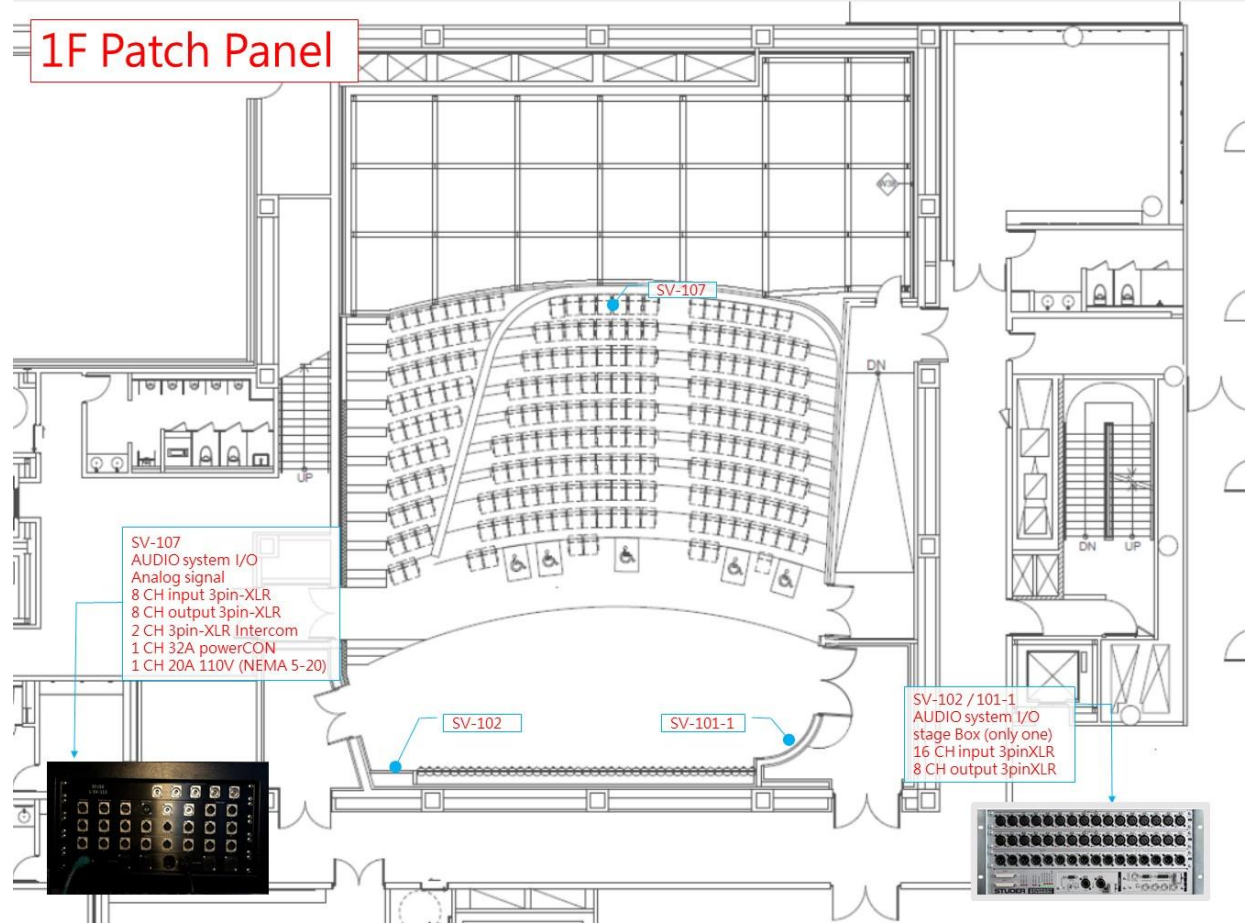


Figure 4-1.1 1F Audio system channel diagram

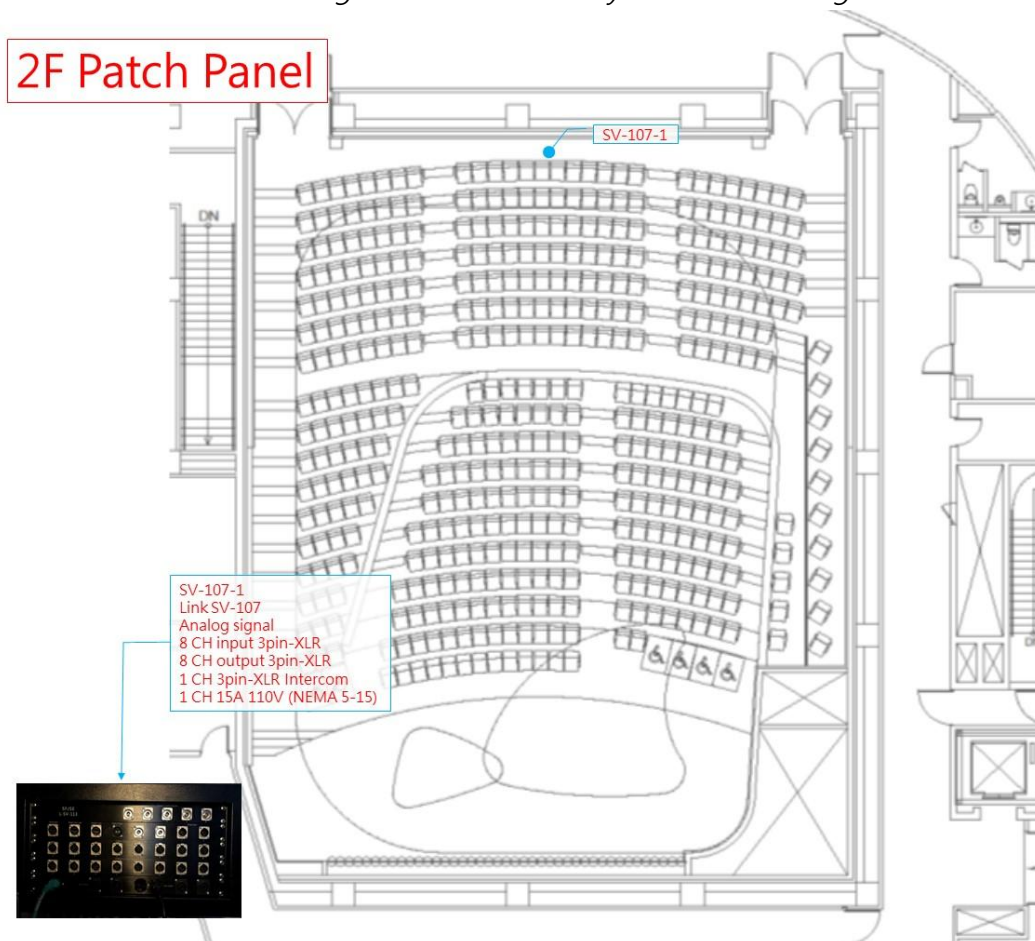


Figure 4-1.2 2F Audio system channel diagram

3F Patch Panel

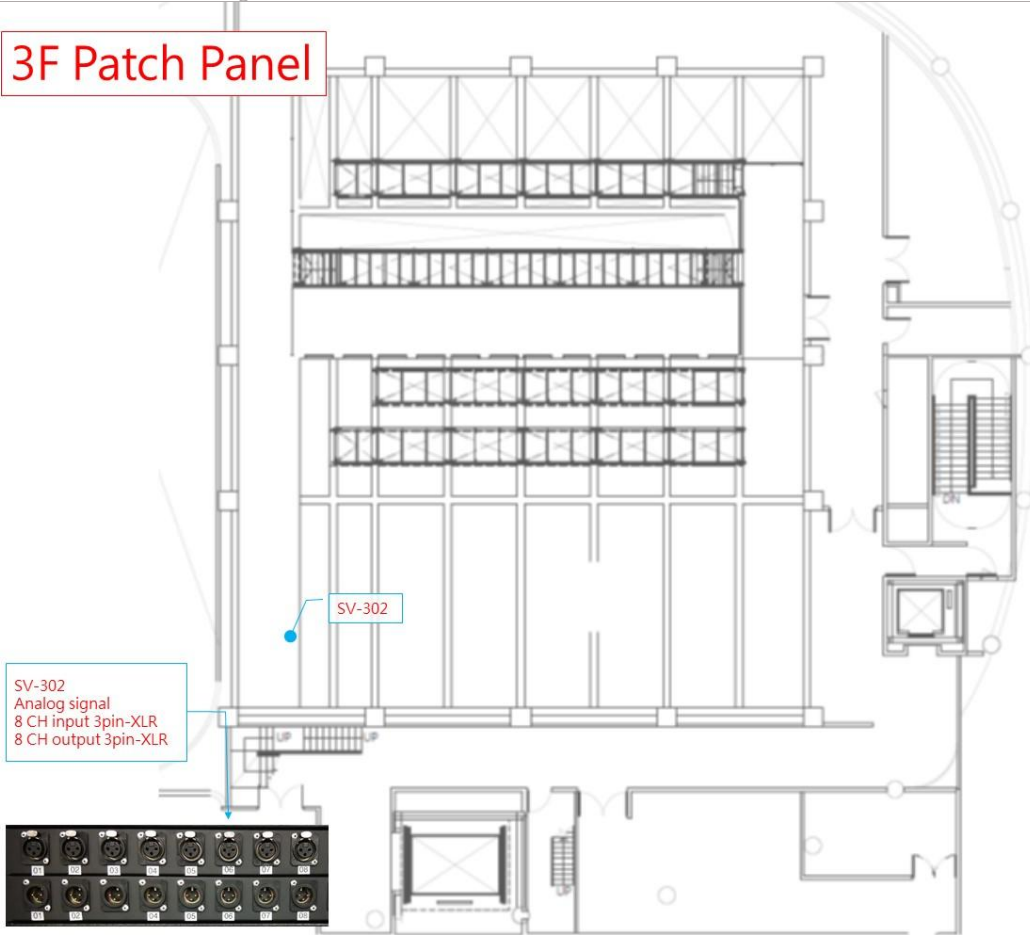


Figure 4-1.3 3F Audio system channel diagram

Optical Fiber : Point-to-Point Channel Diagram

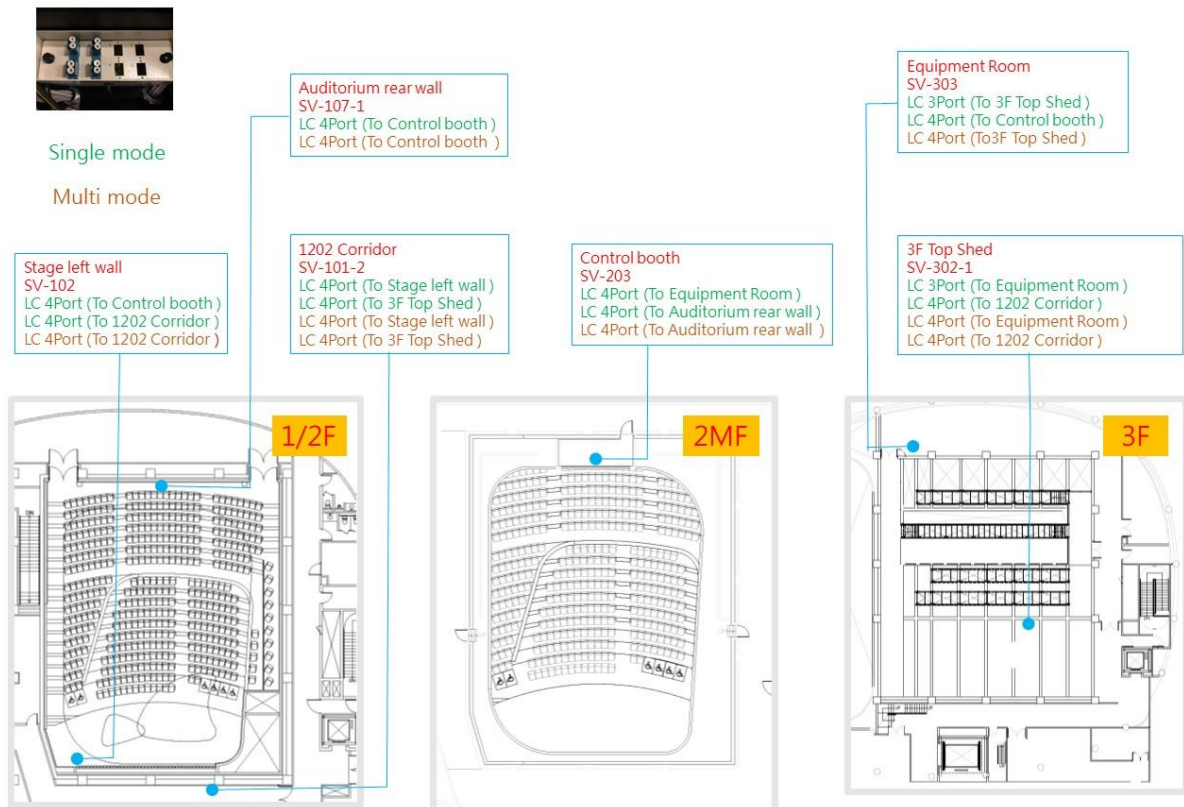


Figure 4-1.5 Optical fiber point-to-point channel diagram

Point-to-Point Channel Diagram

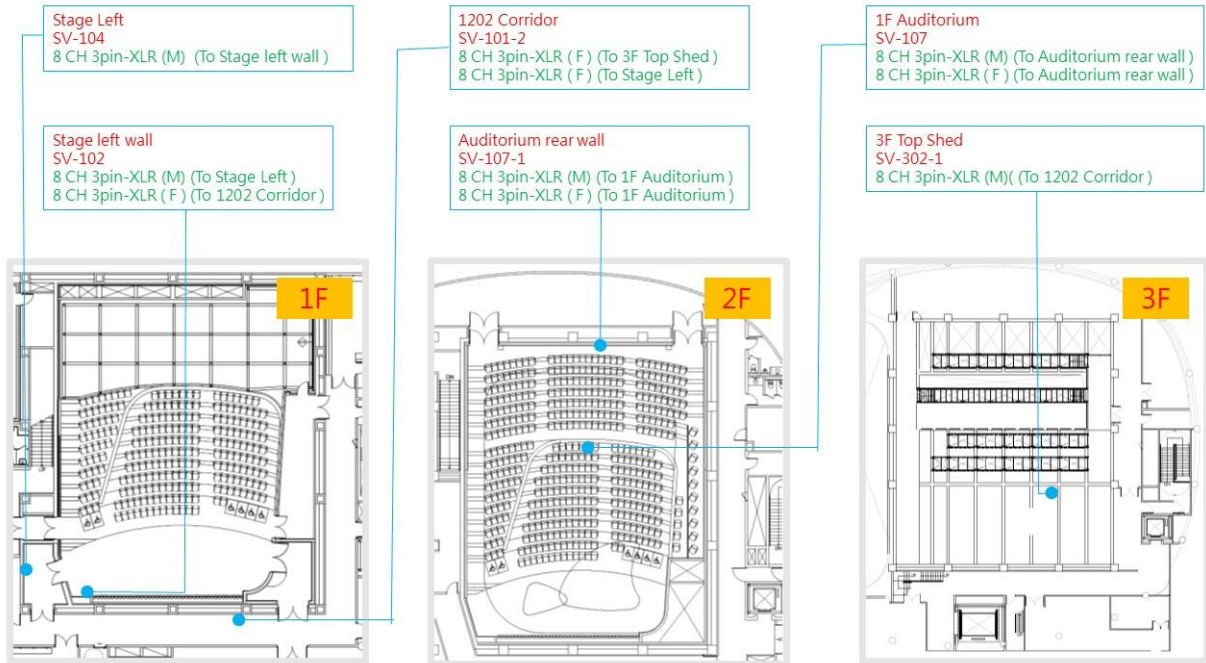


Figure 4-1.5 Signal point-to-point channel diagram

RJ45 : Point-to-Point Channel Diagram

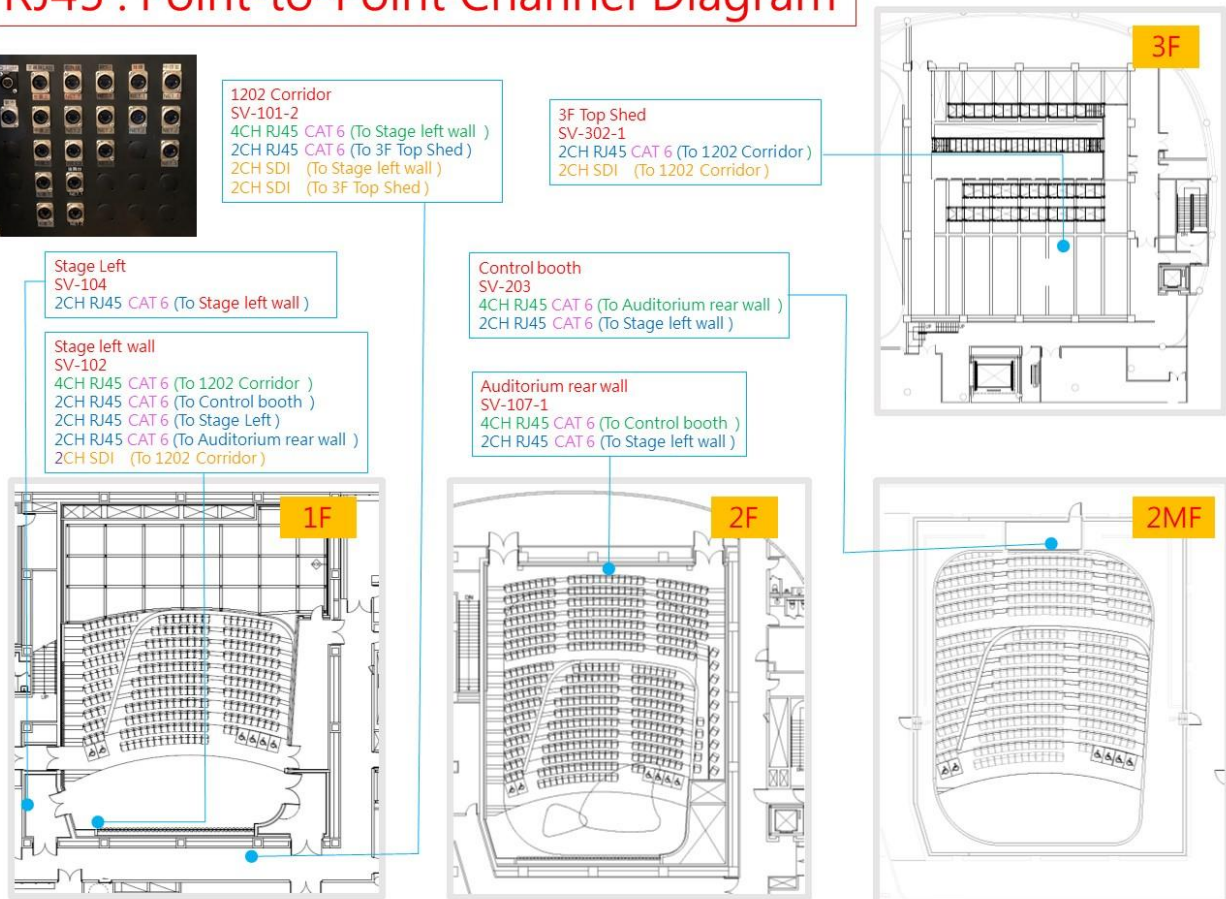


Figure 4-1.6 RJ45 point-to-point channel diagram

4-2 Control Room

| Item | Quantity | Brand-and Model | Paid Item |
|-----------------------------------|----------|-----------------------------|-----------|
| Digital mixer | 1 | Studer Vista 5 M3/32 | |
| Digital I/O Fiber Module | 1 | Studer D21m | |
| CD player | 1 | Tascam CD-500B | * |
| CD-R recorder / player | 1 | Tascam CD-RW 901 MKII | * |
| Multi-circuit recording equipment | 1 | Joeco BBR1D+2.5" USB 1TB HD | * |
| Dual track Hard disk recorder | 1 | Tascam DA 3000 | * |
| Active monitor speakers | 2 | Dynaudio BM12 MkIII | |

Items with * mark are paid items. Please refer to the rate tables of National Kaohsiung Center for the Arts.

4-3 Stage Manager's Desk

The stage manager desk equips with a live sound monitor, video monitors, synchronous show screens with lighting and fly, communication system and paging system.

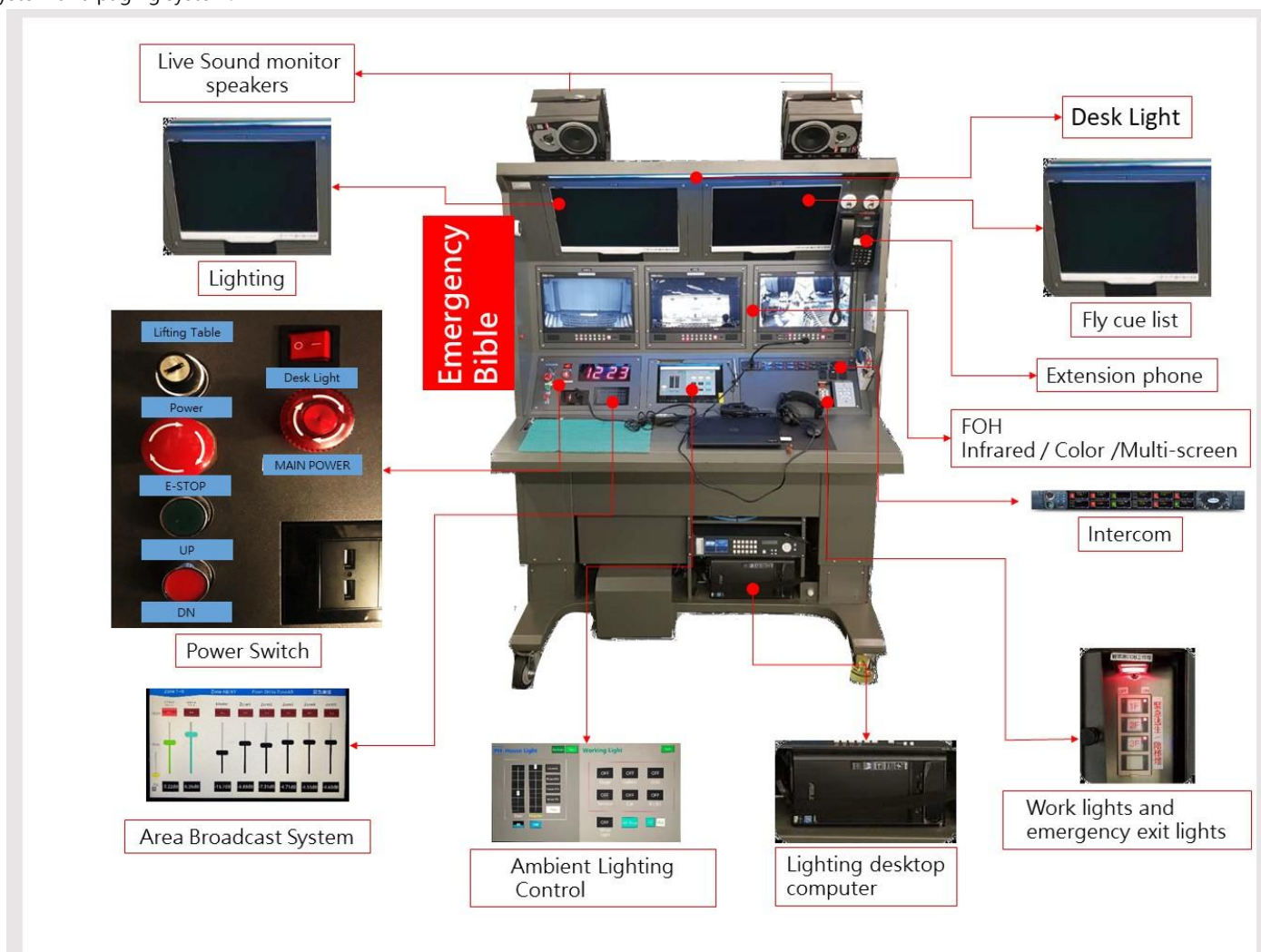


Figure 4-3.1 Stage Manager Desk

4-4 Microphone

| Item | Quantity | Brand and Model. | Paid Item |
|--|----------|---|-----------|
| Dynamic microphone Audio Technica AE4100 | 2 | Audio Technica AE4100 | * |
| Dynamic microphone Audio Technica ATM250 | 4 | Audio Technica ATM250 | * |
| Condenser microphone | 2 | Audio Technica AE5400 | * |
| Cardioid Condenser microphone | 4 | Audio Technica AT4021 | * |
| Cardioid Condenser Boundary Microphone | 2 | Audio Technica U851R | * |
| Stage reception Microphone | 2 | DPA 4017B / DPA UA0836 Holder | |
| Hypercardioid Condenser microphone | 4 | AKG CK-63-ULS+C480B | * |
| Cardioid condenser microphone | 4 | AKG CK-61-ULS+C480B | * |
| Wireless microphone | 2 | Sennheiser SKM500G3+MME865 | * |
| Lavalier wireless microphone | 6 | Sennheiser SK500G3+MKE2 | * |
| Single channel wireless microphone receiver | 8 | Sennheiser EW500G3 | |
| Directional Antenna | 2 | Sennheiser AD3700 | |
| Wave antenna distributor | 3 | Sennheiser ASA1 | |
| Condenser microphone Neumann U87 Ai Studio Set | 1 | Neumann U87 Ai Studio Set Accessories : EA 87 / WS 87 | * |
| Condenser microphone Neumann KM184 | 8 | Neumann KM184 Accessories : SG 21 bk / WNS 100 | * |
| Condenser microphone DPA 2011C/MMP-C | 4 | DPA 2011C/MMP-C | * |
| Condenser microphone DPA 4099-DC-1(For Loud SPL)/DAD6001-BC | 8 | DPA 4099-DC-1(For Loud SPL)/DAD6001-BC Accessories : 1.DoubleBass(BC4099) x 2 2.Cello(CC4099) x 2 3.Piano(PC4099) x 2 4.Clamp(CM4099) x 2 5.Guitar(GC4099) x 4 6.Sax and Trumpet(STC4099) x 2 7.MIC Stand(MS4099) x 1 8.Microphone Clip(UC4099) x 2 9.Violin and Mandolin(VC4099) x 8 | * |

Items with * mark are paid items. Please refer to the rate tables of National Kaohsiung Center for the Arts.

4-5 Communications

| Item | Quantity | Brand and Model | Paid Item |
|----------------------------------|----------|--|-----------|
| Intercom host machine | 1 | Clear-Com Eclipse HX-Delta | |
| System interface | 1 | Clear-Com Helixnet HMS-4 | |
| Double circuit intercom | 3 | Clear-Com Helixnet HBP-2X | |
| Fixed intercom microphone/ speak | 1 | Clear-Com V12PDXY 110/340 Clear-Com V12PDDXY 110 / 340 | |
| Single head receiver microphone | 3 | Clear-Com CC-300 | |
| Double head receiver microphone | 2 | Clear-Com CC-400 | |
| Telephone intercom | 2 | Clear-Com HS-6 | |
| Digital Wireless Intercom set | 2 | 1. Portable wireless sub-station / Clear-Com FS-BP 2. Single-ear headset / Clear-Com CC-300 | * |

Items with * mark are paid items. Please refer to the rate tables of National Kaohsiung Center for the Arts.

4-6 Locations of Communications

| Item Number | Floor | Location |
|-------------|-------|---|
| 1 | 1F | stage right entrance |
| 2 | | stage right entrance |
| 3 | | FOH Auditorium chair below (Row1-3,11) |
| 4 | | Loading Dock |
| 5 | | Recording studio |
| 6 | | Personal makeup room 1 |
| 7 | | Personal makeup room 2 |
| 8 | 2F | Control room |
| 9 | | Control room |
| 10 | 3F | Catwalk |

4-7 Stage Cameras and Video Surveillance Systems

Stage monitors are installed in right and left wing stage entrance, first, second, and third floor lobby, master and secondary control room, dressing rooms and green rooms.

| Item | Quantity | Brand-and Model | Paid Item |
|-----------------------|----------|---|-----------|
| Camera(2/3 inch 3CCD) | 1 | Panasonic AW-HE870 Panasonic LZ20M85G | |
| Remote control | 1 | Panasonic AW-RP50 | |
| Switcher | 1 | Panasonic AW-RP120 | |
| Video recording | Show | Fixed camera for stage panoramic view recording, only suitable for archived copy. | |

Items with * mark are paid items. Please refer to the rate tables of National Kaohsiung Center for the Arts.

4-8 Paging Systems

Backstage Paging Systems available for all dressing rooms, green rooms, Company office and Corridors, see next page. The Paging and Program position is located on the Stage Manager Desk.

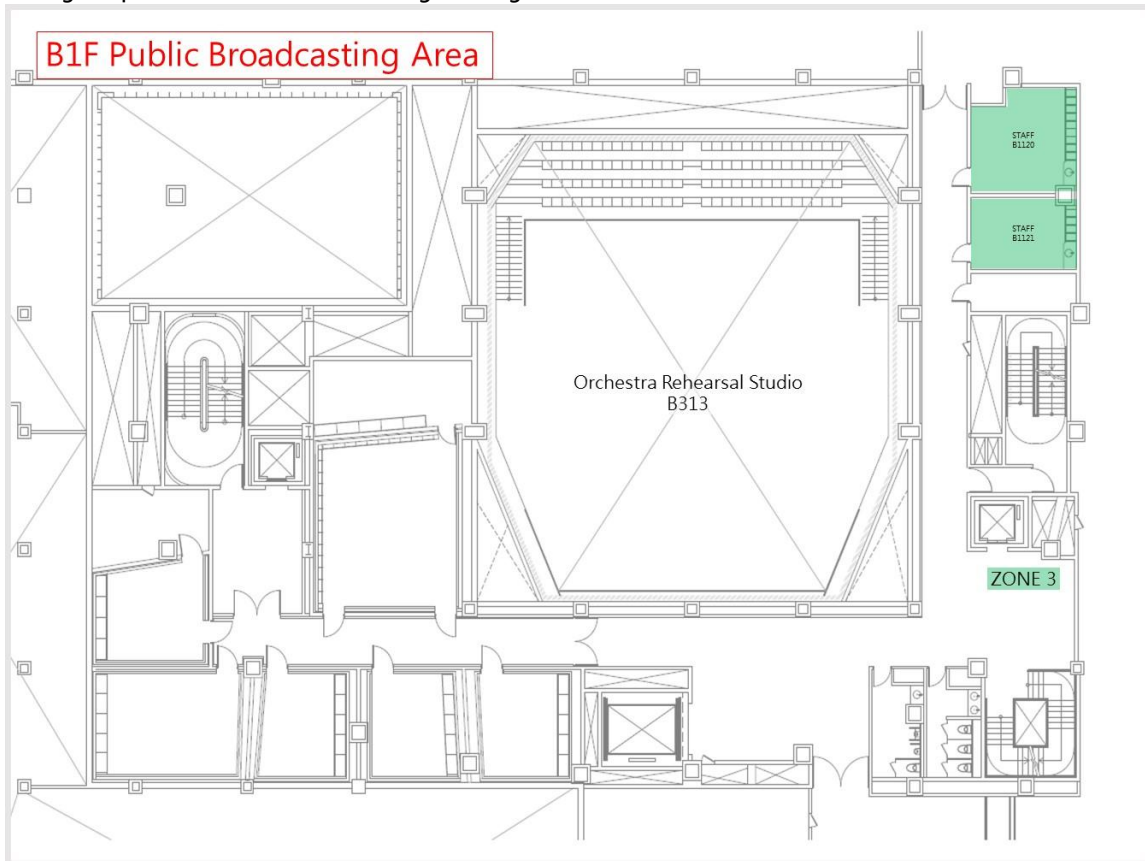


Figure 4-8.1 B1F public broadcasting area

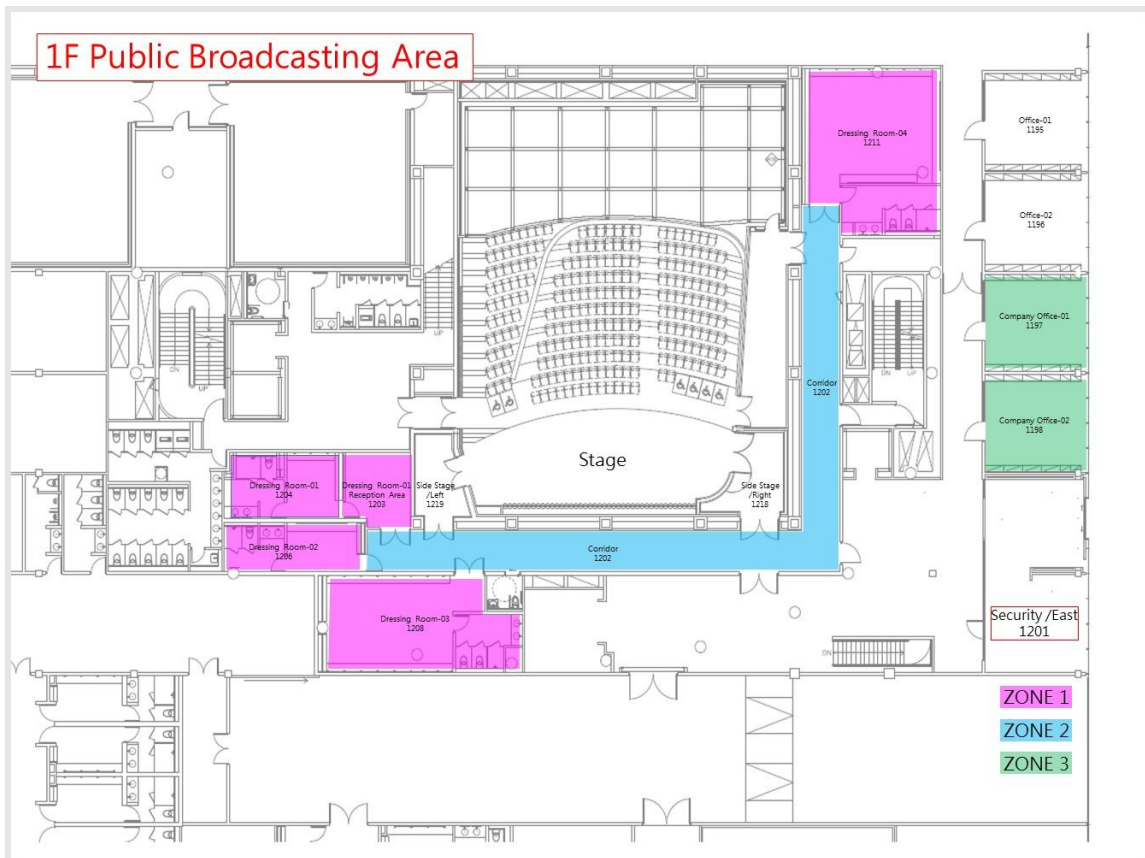


Figure 4-8.2 1F public broadcasting area

4-9 Projector

| Name of Item | Quantity | Brand and Model | Note |
|----------------------------------|----------|--|-------------------|
| 5K Lumens LCD Projector | 2 | NEC PE501X | * Option 2 |
| 5K Lumens Laser Projector | 2 | Optoma ZU500USTe Projection distance (45.7cm132 inches - 58.3cm155 inches) | * Option 2 |
| 6K Lumens Laser Projector | 2 | Panasonic PT-VMZ60T · Wide-angle lens(Zoom) Lens : throw ratio 1.09 -1.77 : 1 | * Option 2 |
| 10K Lumens Laser Projector | 1 | Panasonic PT-RCQ10 · Normal lens (Zoom) Lens : throw ratio 1.71~2.41 : 1 | * Option 2 |
| Dedicated Ultra Short Focus Lens | 1 | ET-DLE020 · Lens : throw ratio 0.28~0.299 : 1 (For Panasonic PT-RCQ10) | * Option 2 |
| 30K Lumens Laser Projector | 2 | Panasonic PT-RQ35K with optional lens ET-D3LEW60 (throw ratio : 0.991-1.18:1) ET-D3LEW10 (throw ratio : 1.35-1.84:1) ET-D3LES20 (throw ratio : 1.79-2.59:1) | * Option 2 · 3 |
| 17.3" Full HD LCD Monitor | 2 | Datavideo TLM-170L | * Option 1 |
| Projection screen | 4 | Grandview X-Press Pull-UP 100-inch projection | * Option 1 |

Items with * mark are paid items. Please refer to the rate tables of National Kaohsiung Center for the Arts.

Option 1 : Setup and operating is not included !

Option 2 : Operating is not included !

Option 3 : Rental fee 50% off from second show.

5 Backstage Facilities

5-1 Dressing Rooms and Green Rooms

All dressing rooms and green rooms are on the first floor.

| No. | Room No. | Name | Capacity | Notes |
|-----|----------|------------------|----------|---|
| 1 | 1204 | Dressing Room 01 | 2 | Includes mirror, table and chairs, toilet and shower |
| 2 | 1206 | Dressing Room 02 | 3 | Includes mirror, table and chairs, toilet and shower |
| 2 | 1208 | Dressing Room 03 | 13 | Includes upright piano, mirror, table and chairs, toilet and shower |
| 4 | 1211 | Dressing Room 04 | 13 | Includes mirror, table and chairs, toilet and shower |

5-2 Orchestra Facilities

| No. | Item | Quantity | Notes |
|-----|---|----------|---|
| 1 | Chair | 150 * | |
| 2 | Ensemble stool | 18 * | Rotate : 6 Unable to rotate : 12 |
| 3 | Conductor' s chair | 1 * | |
| 4 | Music stand | 140 * | |
| 5 | Music stand Tray | 10 * | |
| 6 | Music stand light | 60 * | White light, two brightness mode |
| 7 | Conductor' s podium | 1 * | WENGER Double podium / Base podium:1.09 x 0.97 x 0.15 m Double podium / Upper podium:0.81 x 0.97 x 0.15 m Single podium :1.2 x 1.15 x 0.25 m |
| 8 | Conductor' s stand | 1 * | |
| 9 | Percussion table stand | 8 * | |
| 10 | Endpin stopper | 20 * | |
| 11 | Platform | 30 * | Large L183cm*W138cm*H22cm*10 Medium L183cm*W92cm*H22cm*10 Small L183cm*W46cm*H22cm*10 |
| 12 | Acoustic shield | 5 * | |
| 13 | Resonance Podium for Violin 100*60*15(cm) | 8 * | |
| | Resonance Podium for Violin 100*60*20(cm) | 8 * | |
| | Resonance Podium for Cello 130*60*15(cm) | 4 * | |
| | Resonance Podium for Cello 130*60*20(cm) | 4 * | |
| | Solo Musician' s Podium 175*100*20(cm) | 1 * | |
| | Solo Musician' s Podium 115*110*15(cm) | 1 * | |

Items with * mark are shared with Concert Hall.

5-3 Pianos (shared between four venues)

| No. | Item | Brand | Model Number | Quantity | Notes |
|-----|--------------------------|-----------------|-------------------------|----------|-------|
| 1 | Model-D Concert grand | Steinway & Sons | D-274 | 3 | * |
| 2 | Concert grand | FAZIOLI | F308 | 1 | * |
| 3 | Grand Piano | YAMAHA | C7XPE | 1 | * |
| 4 | Grand Piano | KAWAI | SK-6L | 1 | * |
| 5 | Celesta | Schiendmayer | 5 ½ Octave Studio model | 1 | * |
| 6 | Harpsichord | J.C.NEUPERT | Hemsch | 1 | * |
| 7 | Upright Piano | YAMAHA | U3 | 1 | * |
| 8 | Organ | ORGELBAU | Johannes KLAIS | 1 | * |

Items with * mark are paid items. Please refer to the rate tables of National Kaohsiung Center for the Arts.

Important :

1. Pianos shared with four venues, booking in advance is required.
2. WeiWuYing's contract-signed piano technician must tune all pianos before performance. (Piano hire fees do not include tuning costs)
3. Extra material (any object touching the strings during the performance, including hands or palms) pianos are limited to YAMAHA C7XPE and KAWAI SK-6L, which should be restored and tuned by the venue's contracted tuner at the end of the performance (at the latest on the next day) at the expense of the applicant.
4. While WWY' s piano is in part of the performance, the Fog and Haze Machine can' t be used.

5-4 Loading Dock

5-4-1 East Dock

Recital Hall and Concert Hall use the East Dock for loading and unloading. The dock is equipped with two hydraulic dock leveler that can be adjusted according to the required height.

Dock Dimension

Dimension : 8.75m (width)

Clearance : 4.3m height from floor to top

3.8m height from dock to grid area (Truck height limit 4.2m)

Height from dock to floor: 0.98m

Stage entrance: minimum 1.95m (width) x 2.2m (height)

※Notes for Container Transport:

Due to the limitation of the slope at the entry of the loading dock, the minimum height of the trailer's low bed should be higher than 100cm. Also, if the company hires a 40' high-cube container, the bed rack should be within the height of 135~140cm to accommodate the height of loading gate.

5-4-2 Handling equipment

3mt Manual Hydraulic Pallet Jack x1

1.5mt Stand-Up Automatic Electric Forklift x1

* Forklift drivers are required to pass the forklift certification test and obtain a technician's license. If you need to use the forklift, please contact us as soon as possible.

* Aerial work trucks are always stationed at the East Pier Lane, please make an early request if you need to move your vehicle.

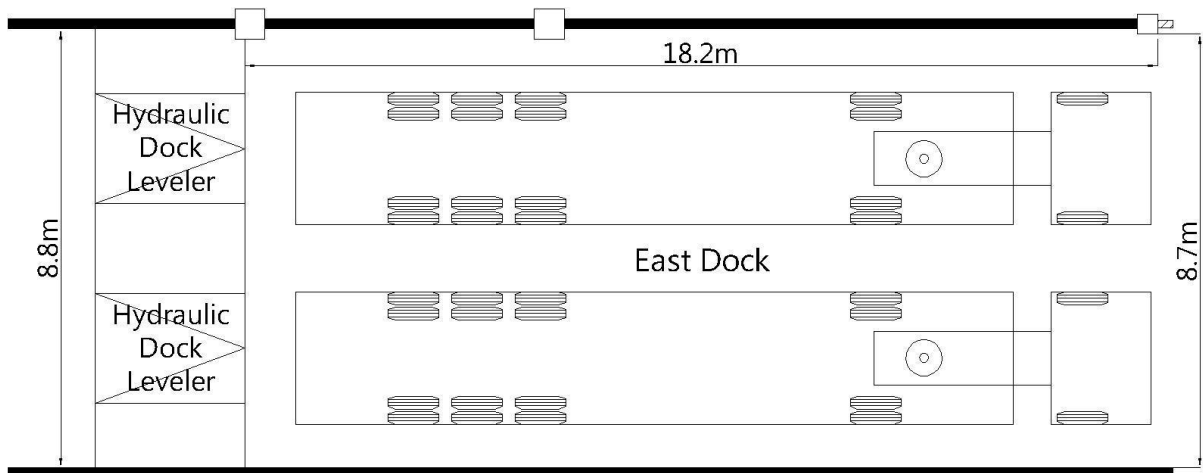


Figure 5.1- East Loading Dock Plan

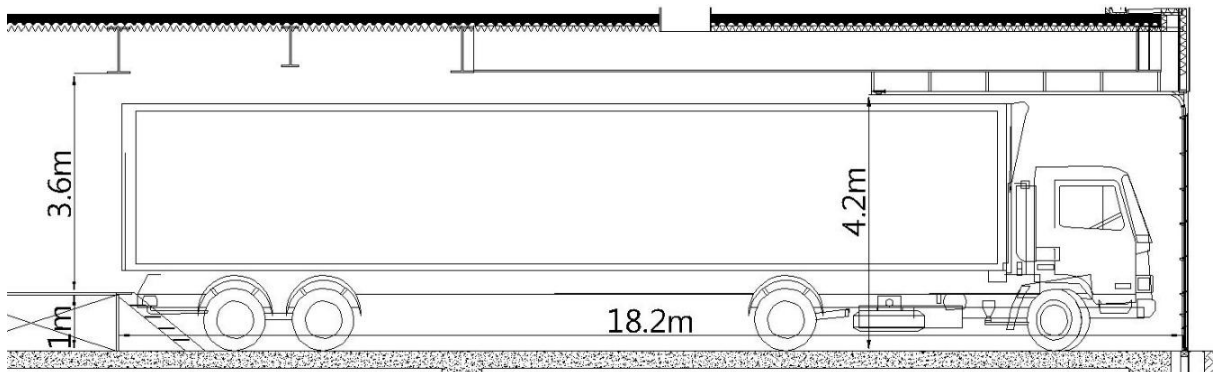


Figure 5.2- East Loading Dock Section

5-4-3 Loading Flow

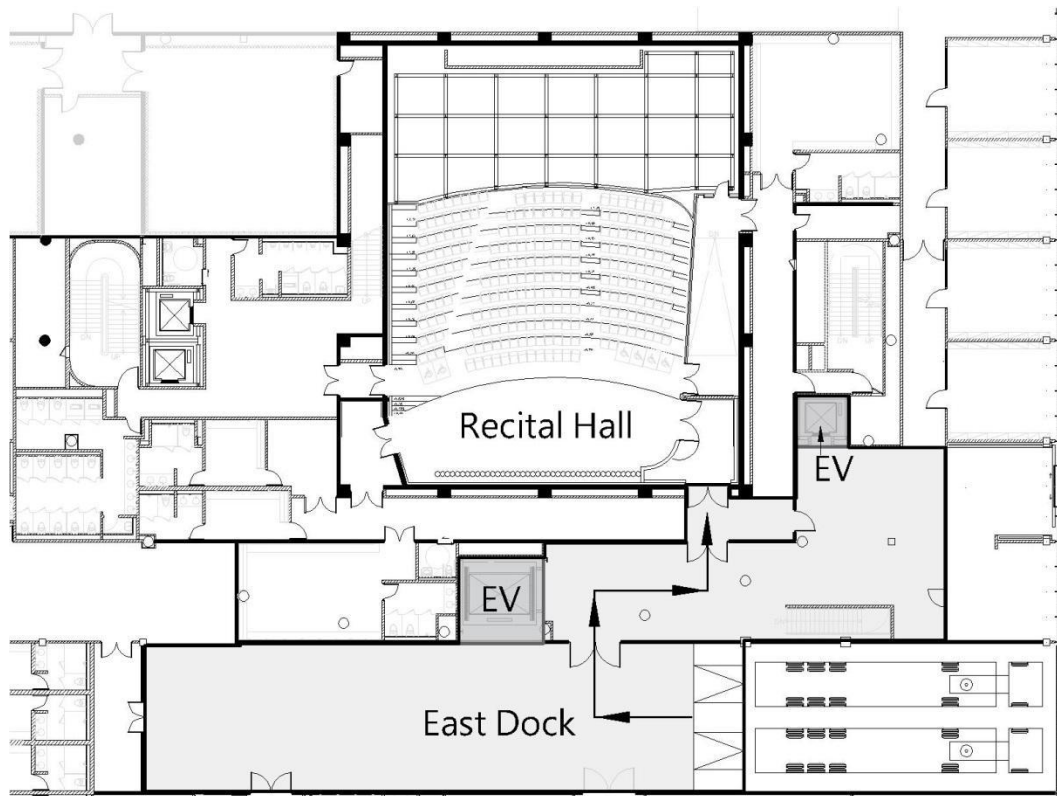


Figure 5.3 - Loading Flow

5-4-4 Hydraulic Dock Leveler

- Capacity: 22.6mt
- Area: 198cm (width) x 221.9cm (length)
- Elevation: +/- 30.5cm
- Quantity: 2 on east dock

5-5 Other Facilities

5-5-1 Rehearsal Rooms

There is no rehearsal studio dedicated to the Playhouse. Additional rehearsal space is limited across the WeiWuYing. There are 13 different function and accommodated rehearsal studios, these available for hire between four major theatres. Requests should be discussed well in advance to determine availability. The hire fees please refer to the rate tables of National Kaohsiung Center for the Arts.

| Room No. | Name | Dimension (Length x Width x Height / m) | Notes |
|----------|----------------------------|---|---|
| 1182 | Medium Rehearsal Studio-02 | 11.4x10.8x3.8 | 1. Wooden floor covered gray color dance floor , Sound absorption wall x 2 side ,Wall mount glassless mirrors x 2 side 2. Capacity : 50 |
| 1184 | Medium Rehearsal Studio-03 | 11.1x10.8x4 | 1. Grand Piano ,Wooden floor covered gray color dance floor , Sound absorption wall x 2 side ,Wall mount glassless mirrors x 2 side 2. Capacity : 50 |
| 1186 | Large Rehearsal Studio-04 | 17.5x12.1x3.9 | 1. Grand Piano ,Wooden floor ,black color dance floor , Wall mount glassless mirrors x 2 side ,Fixed Ballet barre on the single sided wall mirror x 2 2. Capacity : 110 |
| | | Subsidiary space 6.6×8.8 ×3 | Rehearsal Studio-04 use only Green Room-01(With dressing room) |
| 1192 | Large Rehearsal Studio-05 | 19.3x12.2x3.9 | 1. Grand Piano ,Wooden floor , black color dance floor , Wall mount glassless mirrors x 2 side ,Fixed Ballet barre on the single sided wall mirror x 2 2. Capacity : 110 |
| | | Subsidiary space 6.6×8.8 ×3 | Rehearsal Studio-05 use only Green Room-02(With dressing room) |
| B1111 | Small Rehearsal Studio-06 | 8x7.4x2.3 | 1. Upright piano ,Chair , Music stand ,Wooden floor , Sound absorption wall 2. Capacity : 25 |
| B1112 | Small Rehearsal Studio-07 | 5.2x4.4x2.3 | 1 Chair , Music stand ,Wooden floor ,Sound absorption wall 2 Capacity : 10 |
| B1113 | Small Rehearsal Studio-08 | 7.2x5x2.7 | 1. Chair , Music stand ,Wooden floor ,Sound absorption wall 2. Capacity : 15 |
| B1114 | Small Rehearsal Studio-09 | 5.2x3.7x2.7 | 1. Chair , Music stand ,Wooden floor ,Sound absorption wall 2. Capacity : 10 |
| B1115 | Small Rehearsal Studio-10 | 5.2x4.1x2.7 | 1. Chair , Music stand ,Wooden floor , Sound absorption wall 2. Capacity : 10 |
| B1116 | Small Rehearsal Studio-11 | 5.2 × 4.1 x2.7 | 1. Chair , Music stand , Wooden floor , Sound absorption wall 2. Capacity : 10 |
| B304 | Chorus Rehearsal Room | 15.9x9.9x8.8 | 1. Grand Piano ,Chair , Ensemble stool ,Wooden floor , Sound absorption curtain 2. Capacity : 80 |
| B313 | Orchestra Studio | 18.7x14.3x7.8 | 1. fixed auditorium < 84seats > ,Grand Piano , Chair , Ensemble stool , Wooden floor , Sound absorption curtain 2. Capacity : 200 |

5-5-2 Carpentry Shop / Costume Shop / Laundry Room

National Kaohsiung Center for the Arts is equipped with basic production facilities, include Carpentry Shop, Costume Shop, and laundry rooms. Those for hire between four major theatres. The hire fees please refer to the rate tables of National Kaohsiung Center for the Arts.

| Room No. | Name | Dimension (Length x Width x Height / m) | Notes |
|----------|-----------------|---|---|
| 1002 | Carpentry Shop | 11.9×19.7×3 | Basic wood crafts and electrical tools |
| 1165 | Costume Shop-01 | 5.9×10.2×3 | Basic facilities for the maintenance of costume; Sewing machine, overlock machine and steam / iron equipment |
| 1181 | Costume Shop-02 | 5.8×11.8×3 | |
| B1022 | Costume Shop-03 | 5.4×3.7×2.5 | |
| 1163 | Laundry Room-01 | 5.8×4.9×3 | Washing machine, tumble dryers, sink and clothes folding table |
| B1019 | Laundry Room-02 | 6×8.2×3 | |